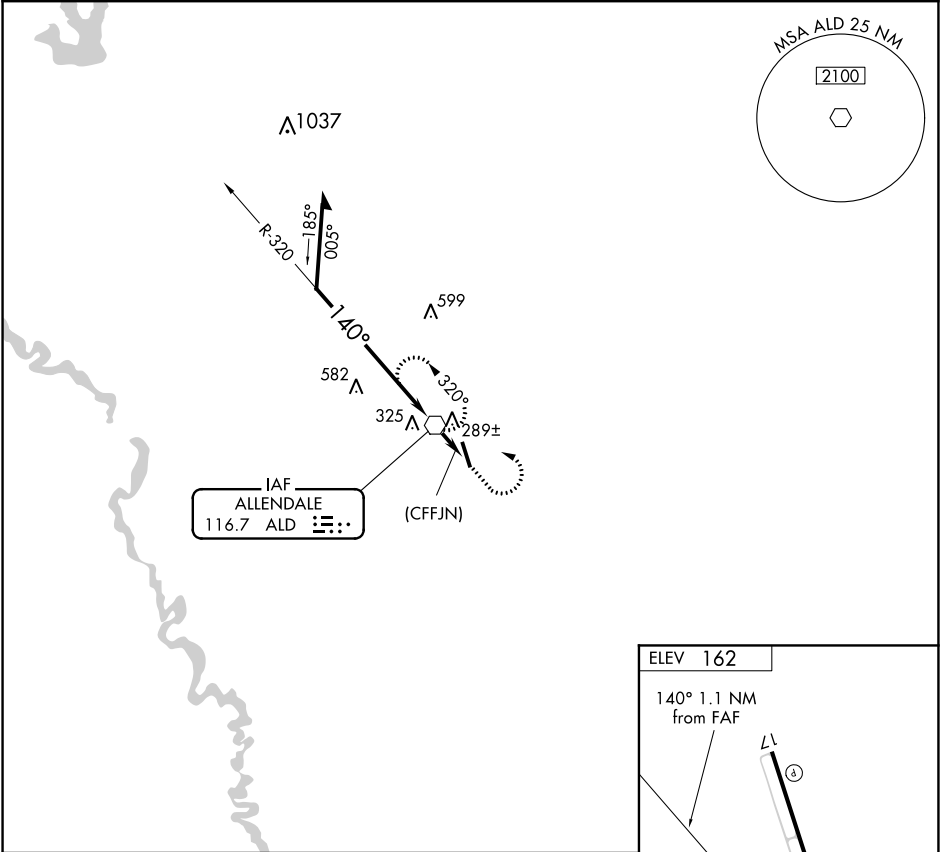


VOR ALD 116.7	APP CRS 140°	Rwy Idg TDZE Apt Elev	N/A N/A 162
ALLENDALE COUNTY (AQQX)			

When local altimeter setting not received, use Augusta Rgnl at Bush Field altimeter setting.

MISSED APPROACH: Climb to 1300, then climbing left turn to 2000 direct ALD VOR and hold.

AWOS-3PT 118.95	JACKSONVILLE CENTER 132.925 363.2	UNICOM 122.8 (CTAF) 0
--------------------	--------------------------------------	--------------------------



Remain within 10 NM

ALD VOR

1300

2000

ALD

(CFFJN)

1.1 NM

ELEV 162

140° 1.1 NM from FAF

210±

35

MIRL Rwy 17-35 0

CATEGORY	A	B	C	D
CIRCLING	860-1	698 (700-1)	NA	

Knots	60	90	120	150	180
Min:Sec	1:06	0:44	0:33	0:26	0:22