

WAAS CH 82232 W05A	APP CRS 049°	Rwy Idg TDZE 96 Apt Elev 101	6002
--	------------------------	--	-------------

RNAV (GPS) RWY 5

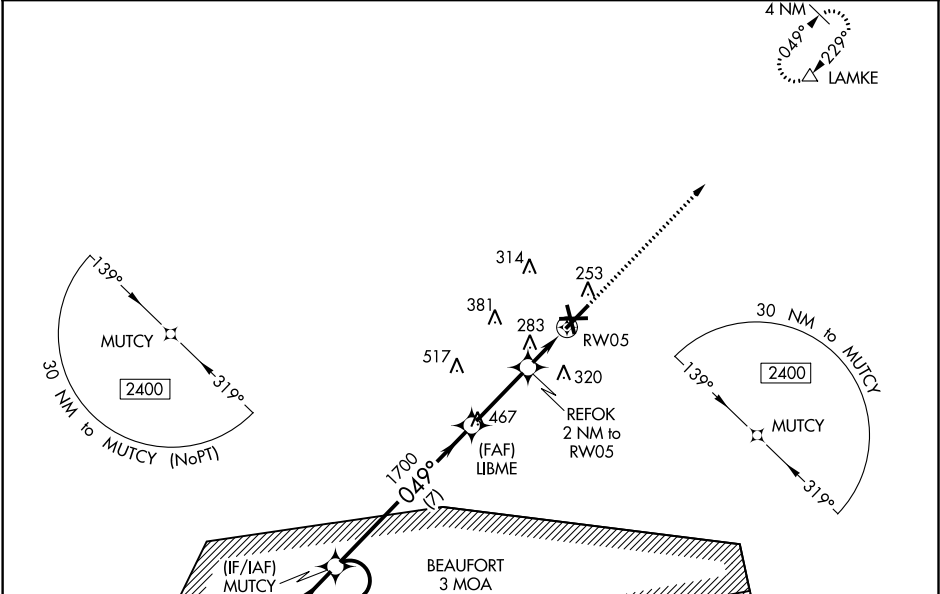
LOWCOUNTRY RGNL (RBW)

⚠ For uncompensated Baro-VNAV systems, procedure NA below -15°C (5°F) or above 54°C (130°F).
DME/DME RNP-0.3 NA. VDP and Baro-VNAV NA when using Charleston AFB/Intl altimeter setting.

⚠ Helicopter visibility reduction below ¾ SM NA. When local altimeter setting not received, use Charleston AFB/Intl altimeter setting and increase all DA 78 feet and all MDA 80 feet; increase LPV, LNAV/VNAV all Cats and Circling Cat D visibility ¼ mile, increase LNAV Cat C - D visibility ½ mile, increase Circling Cat C visibility ½ mile.

MISSED APPROACH:
Climb to 2100 direct LAMKE and hold.

AWOS-3 118.725	CHARLESTON APP CON 120.7 306.925	GCO 121.725	UNICOM 122.8 (CTAF) 0
--------------------------	--	-----------------------	---------------------------------



ELEV	101	TDZE	96
------	-----	------	----

4 NM Holding Pattern

MUTCY VGSI and RNAV glidepath not coincident (VGSI Angle 3.50/TCH 49).

2100 LAMKE

GP 3.00° TCH 53

2400 ← 229° → 049° →

049°

1700

REFOK 2 NM to RW05

*1.1 NM to RW05

RW05

*760

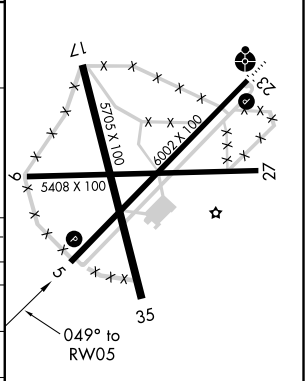
7 NM

2.9 NM

0.9 NM

1.1 NM

*LNAV only.



CATEGORY	A	B	C	D
LPV DA		431-1 7/8	335 (400-1 7/8)	
LNAV/VNAV DA		507-1 3/8	411 (500-1 3/8)	
LNAV MDA	540-1	444 (500-1)	540-1 3/8	444 (500-1 3/8)
CIRCLING	620-1 519 (600-1)	640-1 539 (600-1)	700-1 1/2 599 (600-1 1/2)	700-2 599 (600-2)

REIL Rwy 23

MIRL Rwy 5-23 0

SE-2, 03 DEC 2020 to 31 DEC 2020

SE-2, 03 DEC 2020 to 31 DEC 2020