


LOC/DME I-RBW <b>110.15</b> Chan <b>38</b> (Y)	APP CRS <b>229°</b>	Rwy Idg <b>6002</b> TDZE <b>101</b> Apt Elev <b>101</b>
--	------------------------	---

ILS Z or LOC Z RWY 23  
LOWCOUNTRY RGNL (RBW)

▼ ▲ NA	<p>Inop table does not apply to S-LOC 23 Cat C. GPS and DME required. Helicopter visibility reduction below ¾ SM NA. VDP NA with Charleston AFB/Int altimeter setting. When local altimeter setting not received, use Charleston AFB/Int altimeter setting: increase S-ILS 23 DA to 379 feet and all MDA 80 feet; increase S-LOC 23 Cats C/D visibility ½ mile and Circling Cat C visibility ½ mile and Circling Cat D visibility ¼ mile. For inop ODALS when using Charleston AFB/Int altimeter setting, increase S-ILS 23 all Cats visibility to ¾ mile and S-LOC 23 Cat D visibility to 1¾ mile.</p>	<p>ODALS</p> 	<p>MISSED APPROACH: Climb to 1500 then climbing right turn to 2000 direct STOAS and hold.</p>
-----------	---	--	---

AWOS-3 <b>118,725</b>	CHARLESTON APP CON <b>120.7 306,925</b>	GCO <b>121,725</b>	UNICOM <b>122.8</b> (CTAF) <b>0</b>
--------------------------	--	-----------------------	--

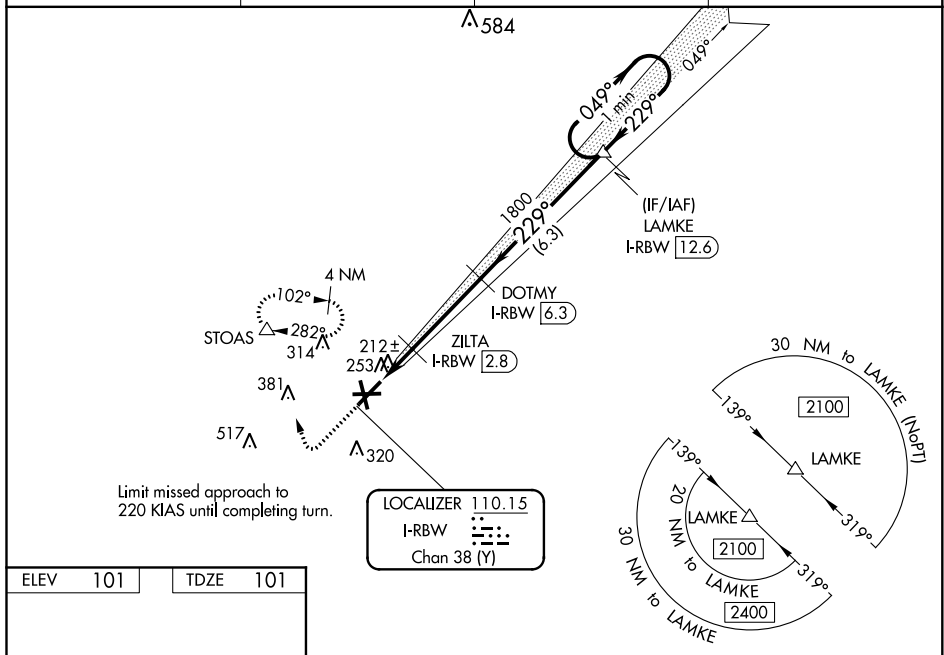


Figure 1-1: Standard Instrument Departures (SIDs) for Runway 23. The diagram shows the REIL and MRL Runway 23 with various SIDs (S-1, S-2, S-3, S-4, S-5, S-6, S-7, S-8, S-9, S-10, S-11, S-12, S-13, S-14, S-15, S-16, S-17, S-18, S-19, S-20, S-21, S-22, S-23, S-24, S-25, S-26, S-27, S-28, S-29, S-30, S-31, S-32, S-33, S-34, S-35, S-36, S-37, S-38, S-39, S-40, S-41, S-42, S-43, S-44, S-45, S-46, S-47, S-48, S-49, S-50, S-51, S-52, S-53, S-54, S-55, S-56, S-57, S-58, S-59, S-60, S-61, S-62, S-63, S-64, S-65, S-66, S-67, S-68, S-69, S-70, S-71, S-72, S-73, S-74, S-75, S-76, S-77, S-78, S-79, S-80, S-81, S-82, S-83, S-84, S-85, S-86, S-87, S-88, S-89, S-90, S-91, S-92, S-93, S-94, S-95, S-96, S-97, S-98, S-99, S-100). The diagram includes various symbols for obstacles, terrain, and navigation aids. The SIDs are categorized into S-1 through S-100, with some having specific altitudes and distances. The diagram also shows the REIL and MRL Runway 23 with various SIDs (S-1, S-2, S-3, S-4, S-5, S-6, S-7, S-8, S-9, S-10, S-11, S-12, S-13, S-14, S-15, S-16, S-17, S-18, S-19, S-20, S-21, S-22, S-23, S-24, S-25, S-26, S-27, S-28, S-29, S-30, S-31, S-32, S-33, S-34, S-35, S-36, S-37, S-38, S-39, S-40, S-41, S-42, S-43, S-44, S-45, S-46, S-47, S-48, S-49, S-50, S-51, S-52, S-53, S-54, S-55, S-56, S-57, S-58, S-59, S-60, S-61, S-62, S-63, S-64, S-65, S-66, S-67, S-68, S-69, S-70, S-71, S-72, S-73, S-74, S-75, S-76, S-77, S-78, S-79, S-80, S-81, S-82, S-83, S-84, S-85, S-86, S-87, S-88, S-89, S-90, S-91, S-92, S-93, S-94, S-95, S-96, S-97, S-98, S-99, S-100).

SE-2, 03 DEC 2020 to 31 DEC 2020