

WAAS CH 56513 W04A	APP CRS 042°	Rwy Idg TDZE Apt Elev	7099 158 158
--	------------------------	-----------------------------	---

RNAV (GPS) RWY 4
ROCKY MOUNT-WILSON RGNL (RWT)

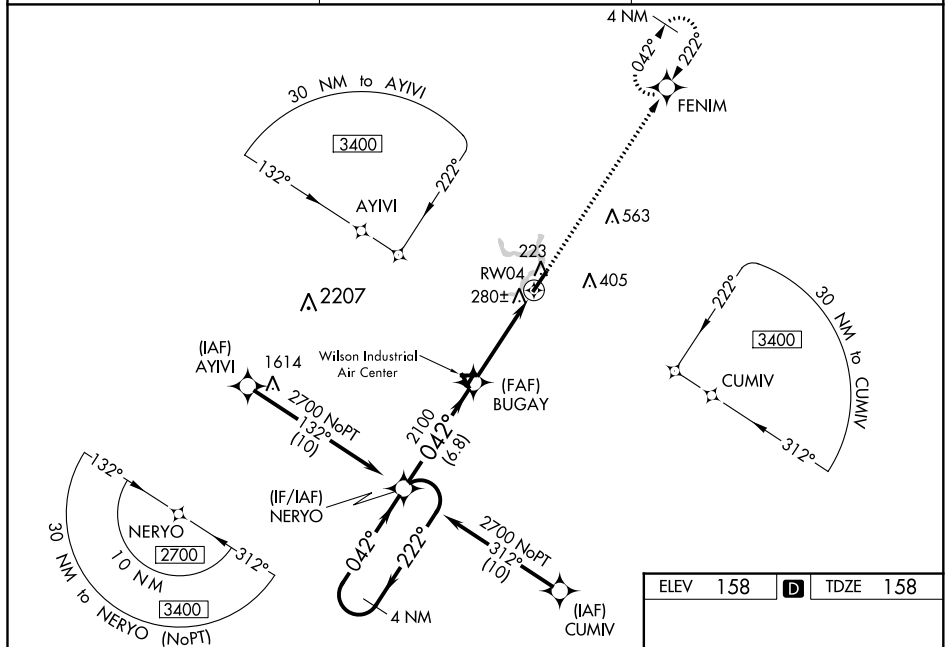
⚠ Inop table does not apply to LPV when using local altimeter setting. For uncompensated Baro-VNAV systems, LNAV/VNAV NA below -1.0°C (14°F) or above 54°C (130°F).
⚠ When local altimeter setting not received, use Wayne Executive Jetport altimeter setting and increase LPV DA to 467; increase LNAV/VNAV DA to 601 and all Cats visibility ¼ mile; increase all MDA 60 feet and LNAV Cats C/D and Circling Cat C visibility ¼ mile.
 For inop MALSR, increase LNAV Cat A/B visibility to 1 mile. DME/DME RNP-0.3 NA.
 Baro-VNAV and VDP NA when using Wayne Executive Jetport altimeter setting.
 Rwy 4 helicopter visibility reduction below ¾ SM NA.

MALSR



MISSED APPROACH:
Climb to 2500 direct
FENIM and hold.

ASOS 118.875	WASHINGTON CENTER 123.85 279.65	UNICOM 123.05 (CTAF) 0
------------------------	---	----------------------------------



SE-2, 03 DEC 2020 to 31 DEC 2020

ELEV	158	D	TDZE	158
------	-----	----------	------	-----

