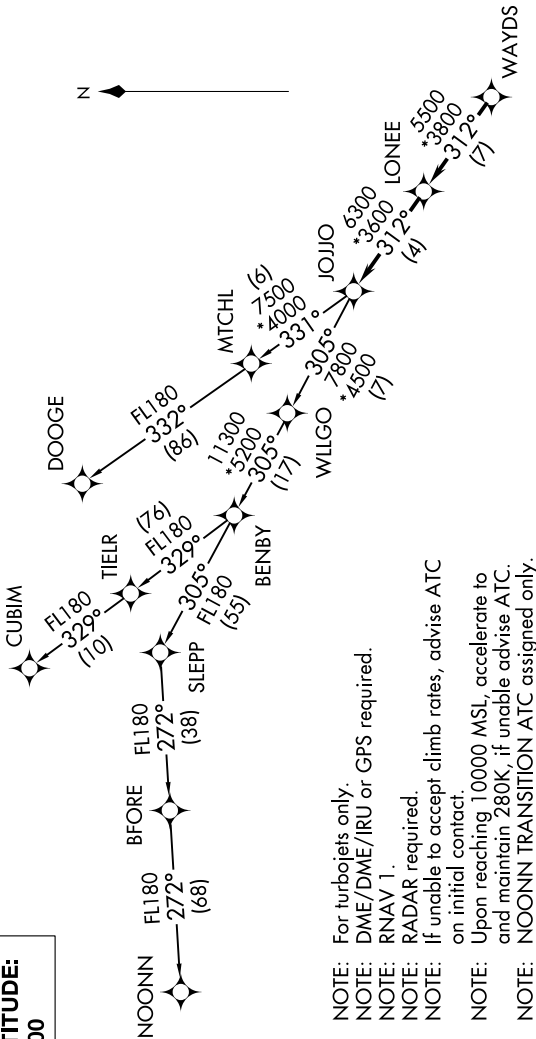


SE-2, 03 DEC 2020 to 31 DEC 2020

ASOS
135.775
CLNC DEL
132.55
UNICOM (CTAF)
122.7
CHARLOTTE DEP CON
120.05 307.8



- NOTE: For turbojets only.
NOTE: DME/DME/IRU or GPS required.
NOTE: RNAV 1.
NOTE: RADAR required.
NOTE: If unable to accept climb rates, advise ATC on initial contact.
NOTE: Upon reaching 10000 MSL, accelerate to and maintain 280K, if unable advise ATC.
NOTE: NOONN TRANSITION ATC assigned only.

TOP ALTITUDE:
3000

DEPARTURE ROUTE DESCRIPTION

Climb on heading assigned by ATC, expect RADAR vectors to WAYDS, then on depicted route to JOJO. Then on assigned transition. Maintain 3000, expect clearance to filed altitude within 10 minutes after departure.

- CUBIM TRANSITION (JOJJO4.CUBIM)
- DOOGE TRANSITION (JOJJO4.DOOGE)
- NOONN TRANSITION (JOJJO4.NOONN)

TAKEOFF MINIMUMS
Rwys 5, 23: Standard.

NOTE: Chart not to scale.

SE-2, 03 DEC 2020 to 31 DEC 2020