

WAAS CH 99424 W23A	APP CRS 230°	Rwy Idg 5001 TDZE 847 Apt Elev 847
--	------------------------	---

RNAV (GPS) RWY 23
SHELBY-CLEVELAND COUNTY RGNL (EHO)

RNP APCH.

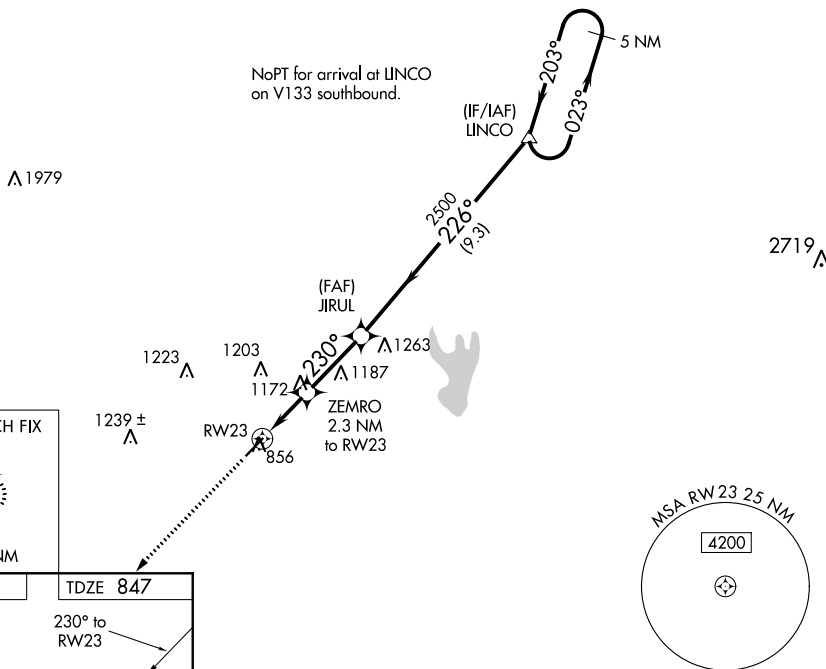
T Baro-VNAV NA when using Charlotte altimeter setting. For uncompensated Baro-VNAV systems, LNAV/VNAV NA below -16°C or above 38°C. When local altimeter setting not received, use Charlotte altimeter setting and increase all DA 88 feet and all MDA 100 feet; increase LPV all Cats visibility $\frac{1}{8}$ SM and LNAV/VNAV all Cats, LNAV Cat C/D visibility $\frac{1}{4}$ SM.

MISSED APPROACH:
Climb to 3000 direct
ZISUG and hold.

AWOS-3
118.425

CHARLOTTE APP CON
120.05 257.2

UNICOM
122.8 (CTAF) **L**




MISSED APCH FIX

ZISUG

050°

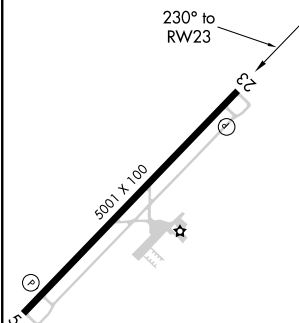
230°



4 NM



MSA RW23 25 NM
4200

ELEV 847	TDZE 847
----------	----------



3000	ZISUG
	

VGSI and RNAV glidepath not coincident (VGSI Angle 3.00/TCH 28).

5 NM
Holding Pattern

* LNAV only.

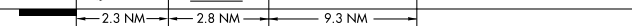
ZEMRO
2.3 NM
to RW23

1

LINC

$$\frac{023^\circ \rightarrow}{003^\circ} 4000$$

GP 3.00°
TCH 40



CATEGORY	A	B	C	D
LPV DA	1097-1 250 (300-1)			
LNAV/ VNAV DA	1123-1 276 (300-1)			
LNAV MDA	1440-1 593 (600-1)	1440-1 ³ / ₄ 593 (600-1 ³ / ₄)		

MIRL Rwy 5-23 **L**

SHELBY, NORTH CAROLINA
Orig-B 15AUG19

35°15'N-81°36'W

SHELBY-CLEVELAND COUNTY RGNL (EHO)
RNAV (GPS) RWY 23