

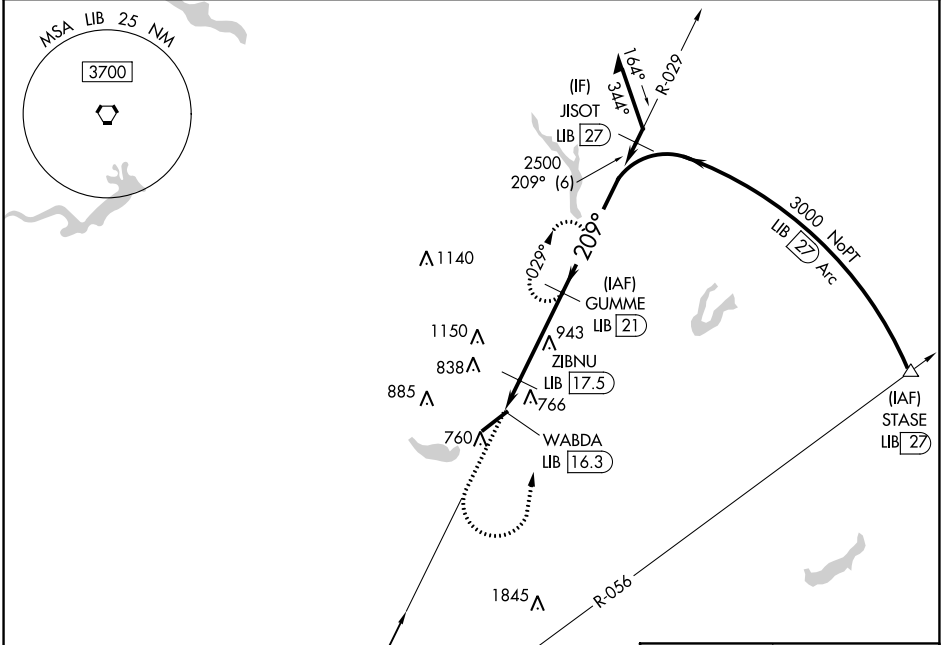
VORTAC LIB <b>113.0</b> Chan <b>77</b>	APP CRS <b>209°</b>	Rwy Idg TDZE Apt Elev <b>616</b>	<b>N/A</b> <b>N/A</b> <b>616</b>
--	------------------------	---	--

VOR/DME-A

BURLINGTON-ALAMANCE RGNL (BUY)

<p><b>⚠</b> When local altimeter setting not received, use Greensboro altimeter setting and increase all MDA 100 feet and increase Cat C visibility 1/4 mile.</p>	<p><b>MISSED APPROACH:</b> Climb to 1400 then climbing left turn to 2500 on heading 350° and LIB R-029 to GUMME/21 DME and hold.</p>
---	--

ASOS <b>135.325</b>	GREENSBORO APP CON <b>126.6 327.075</b>	CLNC DEL <b>120.25</b>	UNICOM <b>122.975 (CTAF) 0</b>
------------------------	--	---------------------------	-----------------------------------



1400	2500	LIB R-029	GUMME LIB 21	Remain within 10 NM
↑	hdg 350°			
WABDA LIB 16.3	ZIBNU LIB 17.5	209°	2500	209°
1540	1.2 NM	3.5 NM		
CATEGORY	A	B	C	D
<b>C</b> CIRCLING	1100-1	484 (500-1)	1520-2 3/4 904 (1000-2 3/4)	1520-3 904 (1000-3)
HIRL Rwy 6-24 0 REIL Rwy 6 and 24 0				

VOR/DME-A

SE-2, 03 DEC 2020 to 31 DEC 2020

SE-2, 03 DEC 2020 to 31 DEC 2020