

WAAS CH <b>99435</b> <b>W10A</b>	APP CRS <b>105°</b>	Rwy Idg TDZE <b>968</b> Apt Elev <b>968</b>
--	------------------------	---

RNAV (GPS) RWY 10

STATESVILLE RGNL (SVH)

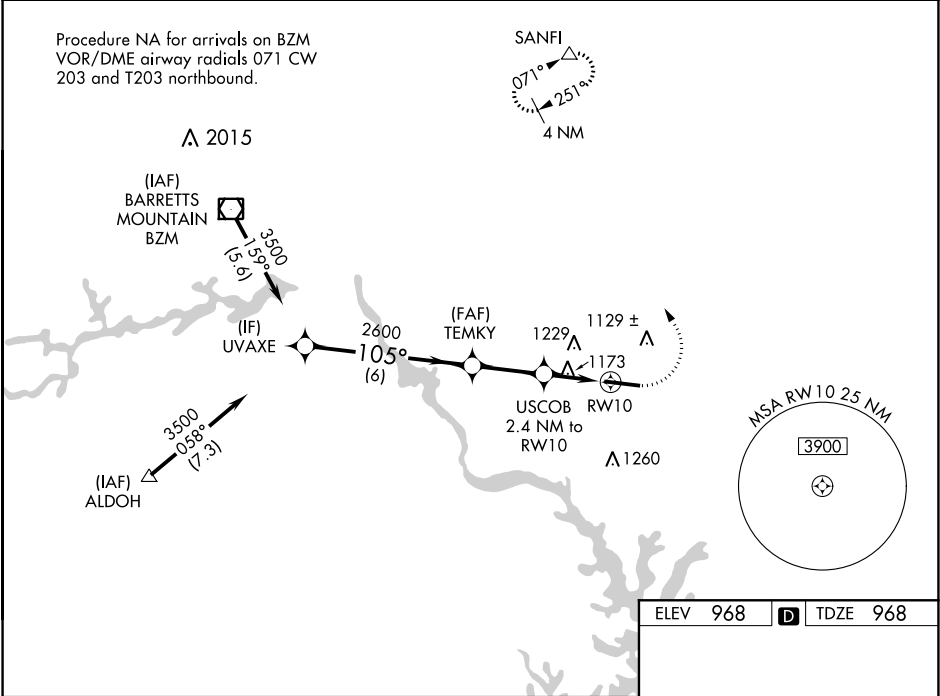
⚠

Baro-VNAV NA when using Lincolnnton altimeter setting. For uncompensated Baro-VNAV systems, LNAV/VNAV NA below -1.6°C (4°F) or above 54°C (130°F). DME/DME RNP-0.3 NA.  
Rwy 10 helicopter visibility reduction below ¾ SM NA. When local altimeter setting not received, use Lincolnnton altimeter setting and increase LPV DA to 1263, LNAV/VNAV DA to 1431, and all MDA 60 feet; increase LNAV/VNAV all Cats, LNAV Cats C/D, and Circling Cat C visibility ¼ mile.

MISSED APPROACH:

Climb to 1440 then climbing left turn to 3400 direct SANFI and hold.

AWOS-3 <b>119.225</b>	ATLANTA CENTER <b>125.15 263.0</b>	UNICOM <b>123.075 (CTAF) 0</b>
--------------------------	---------------------------------------	-----------------------------------



VGSI and RNAV glidepath not coincident (VGSI Angle 3.00/TCH 50).

UVAXE

TEMKY

USCOB 2.4 NM to RW10

RW10

SANFI

105° to RW10

7003 X 100

REIL Rwy 10

HIRL Rwy 10-28

CATEGORY	A	B	C	D
LPV DA	1218-1 250 (300-1)			
LNAV/VNAV DA	1386-1¾ 418 (500-1¾)			
LNAV MDA	1440-1	472 (500-1)	1440-1¾	472 (500-1¾)
CIRCLING	1440-1 472 (500-1)	1540-1 572 (600-1)	1540-1½ 572 (600-1½)	1560-2 592 (600-2)