

WAAS CH <b>63217</b> <b>W32A</b>	APP CRS <b>315°</b>	Rwy Idg <b>4800</b> TDZE <b>356</b> Apt Elev <b>358</b>
--	------------------------	---

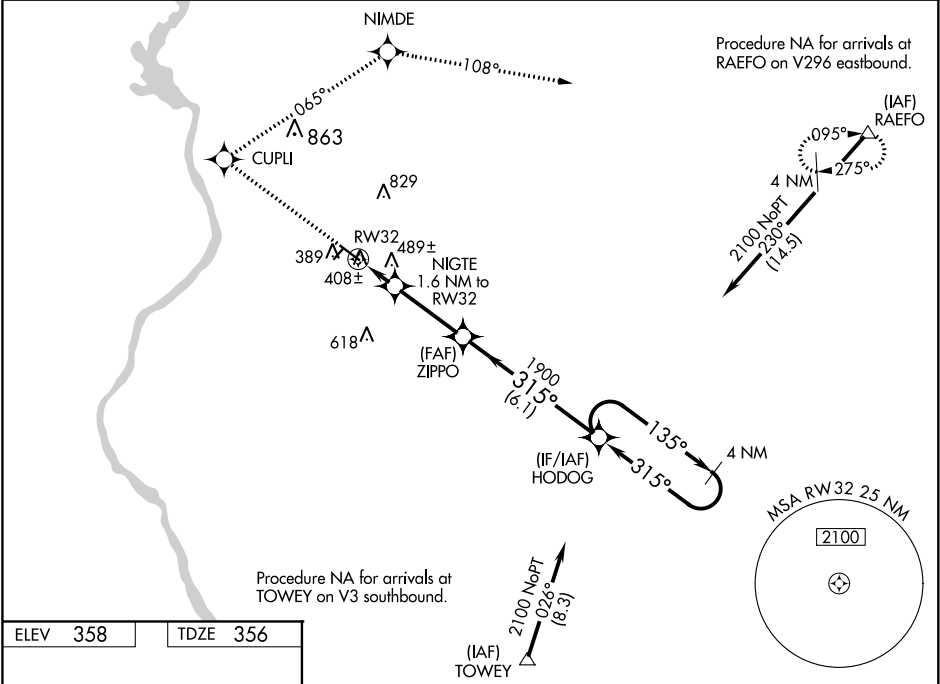
RNAV (GPS) RWY 32

RICHMOND COUNTY (R/CZ)

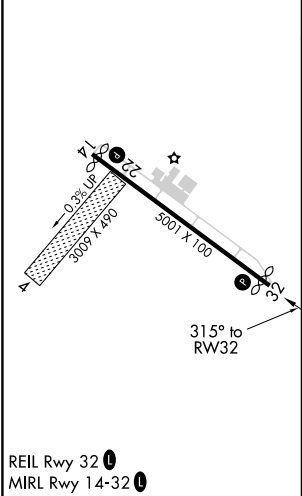
**⚠** Baro-VNAV and VDP NA when using MacKall AAF altimeter setting. For uncompensated Baro-VNAV systems, LNAV/VNAV NA below -15°C (5°F) or above 48°C (118°F). DME/DME RNP-0.3 NA. Rwy 32 helicopter visibility reduction below ¾ SM NA. When local altimeter setting not received, use MacKall AAF altimeter setting and increase all DA 39 feet and all MDA 40 feet and increase LNAV Cat C visibility ¾ SM. Circling Rwy 14 NA at night. Circling NA to Rwys 4 and 22.

**MISSED APPROACH:** Climb to 2400 direct CUPLI and right turn on track 065° to NIMDE and on track 108° to RAEFO and hold.

AWOS-3 <b>118.775</b>	FAYETTEVILLE APP CON <b>127.8 343.725</b>	UNICOM <b>122.8 (CTAF) 0</b>
--------------------------	--	---------------------------------



ELEV 358	TDZE 356
----------	----------



2400	CUPLI	NIMDE	RAEFO	VGSI and RNAV glidepath not coincident (VGSI Angle 3.15/TCH 25).	
				HODOG 4 NM Holding Pattern	
*LNAV only.		NIGTE 1.6 NM to RW32	ZIPPO 1900	2100	
				GP 3.00° TCH 40	
1.1 NM		0.5 NM	3 NM	6.1 NM	
CATEGORY	A		B	C	D
LPV DA	633-1 277 (300-1)				
LNAV/VNAV DA	794-1½ 438 (500-1½)				
LNAV MDA	740-1	384 (400-1)	740-1⅛ 384 (400-1⅛)	740-1¼ 384 (400-1¼)	
CIRCLING	800-1 442 (500-1)	820-1 462 (500-1)	820-1½ 462 (500-1½)	920-2 562 (600-2)	