
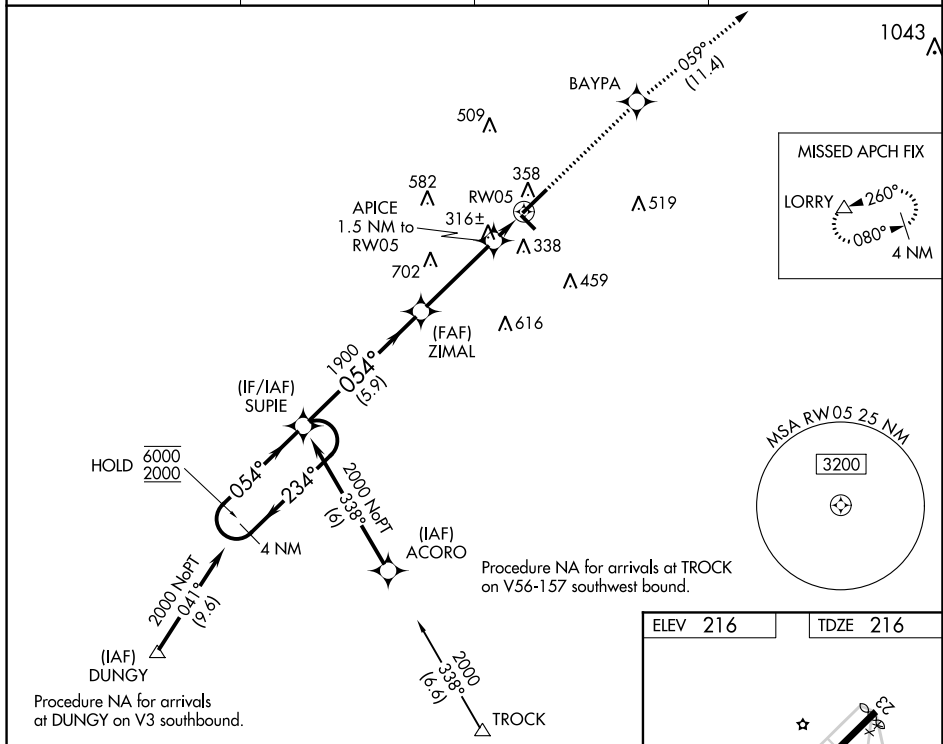


WAAS CH 90423 W05A	APP CRS 054°	Rwy Idg 6502 TDZE 216 Apt Elev 216
--	------------------------	---

RNAV (GPS) RWY 5

RNP APCH.		<div>MALSR</div> <div></div>	MISSED APPROACH: Climb to 2400 direct BAYPA and on track 059° to LORRY and hold.
<div><div><div>T</div><div>A</div></div></div> <div>Circling to Rwy 13 and 31 NA at night. For uncompensated Baro-VNAV systems, LNAV/VNAV NA below -15°C or above 42°C. For inop ALS, increase LNAV/VNAV all Cats visibility to ¾ SM, and LNAV Cat C/D visibility to 1 SM.</div>			
ASOS 134.125	FAYETTEVILLE APP CON 127.8 343.725	GCO 135.075	UNICOM 122.8 (CTAF) 0



4 NM Holding Pattern

SUPIE

ZIMAL 1900

APICE 1.5 NM to RW05

*1 NM to RW05

*LNAV only.

GP 3.00° TCH 51

1900

*740

RW05

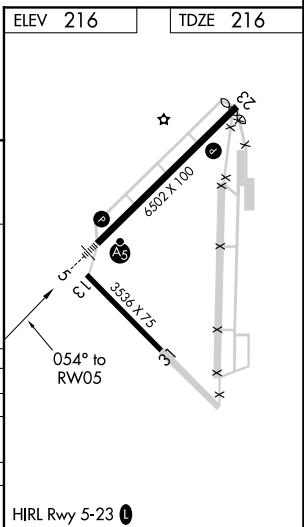
5.9 NM

3.6 NM

0.5 NM

1 NM

CATEGORY	A	B	C	D
LPV DA		416-½	200 (200-½)	
LNAV/VNAV DA		472-½	256 (300-½)	
LNAV MDA	580-½	364 (400-½)	580-⅝	364 (400-⅝)
CIRCLING	740-1	524 (600-1)	780-1½ 564 (600-1½)	1020-2½ 804 (900-2½)



LAURINBURG-MAXTON (MEB)
RNAV (GPS) RWY 5

SE-2, 03 DEC 2020 to 31 DEC 2020

SE-2, 03 DEC 2020 to 31 DEC 2020