

WAAS CH 86904 W23A	APP CRS 230°	Rwy Idg TDZE 185 Apt Elev 192
--	------------------------	---

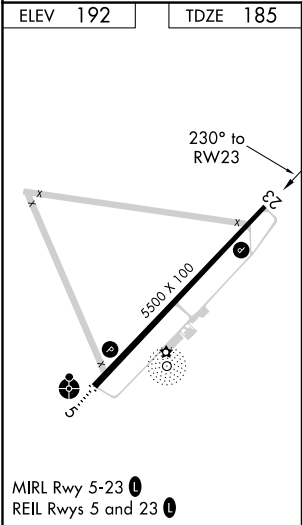
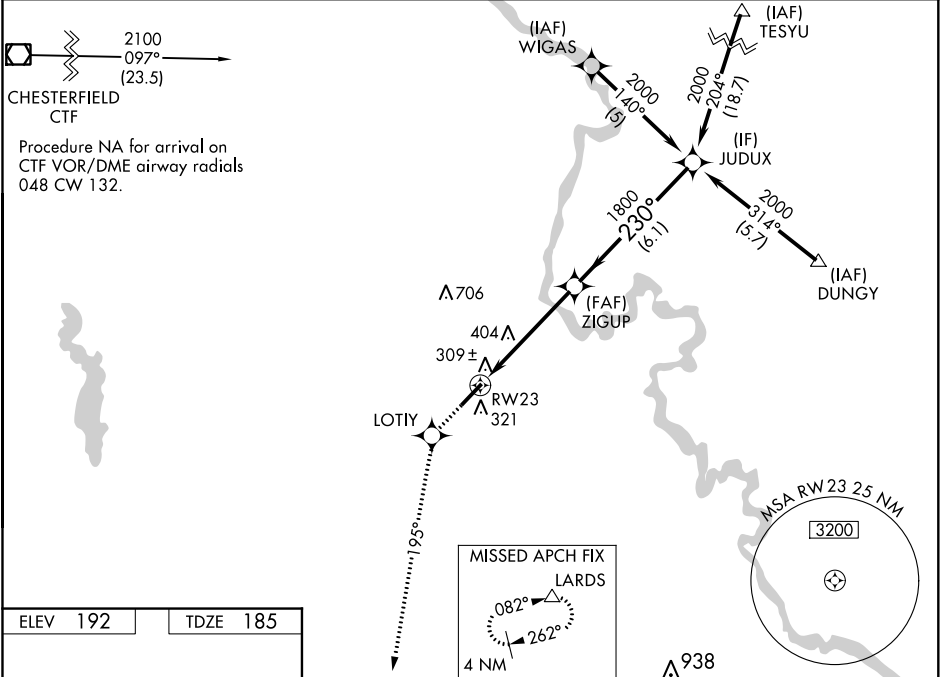
RNAV (GPS) RWY 23

DARLINGTON COUNTY (UDG)

▼ For uncompensated Baro-VNAV systems, LNAV/VNAV NA below -1.5°C (5°F) or above 48°C (118°F). When local altimeter setting not received, use Florence altimeter setting and increase LPV DA to 527, LNAV/VNAV DA to 627, and all MDA 60 feet; increase LPV all Cats visibility ¼ mile. DME/DME RNP-0.3 NA. Helicopter visibility reduction below ¾ SM NA. Baro-VNAV NA when using Florence altimeter setting.

MISSED APPROACH: Climb to 2000 direct LOTIY and via 195° track to LARDS and hold.

AWOS-3PT 119.925	FLORENCE APP CON ★ 118.6 341.7	CLNC DEL 118.55	UNICOM 123.0 (CTAF) 0
----------------------------	--	---------------------------	---------------------------------



2000	LOTIY	tr 195°	LARDS	JUDUX	2000
*LNAV only.		*1.5 NM to RW23	ZIGUP	230°	Procedure Turn NA
RW23		1.5	3.4 NM	6.1 NM	GP 3.00° TCH 40
CATEGORY	A	B	C	D	
LPV DA	479-1 294 (300-1)				
LNAV/VNAV DA	579-1½ 394 (400-1½)				
LNAV MDA	700-1	515 (600-1)	700-1½ 515 (600-1½)	700-1¾ 515 (600-1¾)	
CIRCLING	700-1	508 (600-1)	700-1½ 508 (600-1½)	760-2 568 (600-2)	