

WAAS
CH **70425**
W02A

APP CRS
016°

Rwy ldg **5500**
TDZE **666**
Apt Elev **666**

RNAV (GPS) RWY 2

ROCK HILL/YORK COUNTY/BRYANT FIELD (UZA)

▼

▲

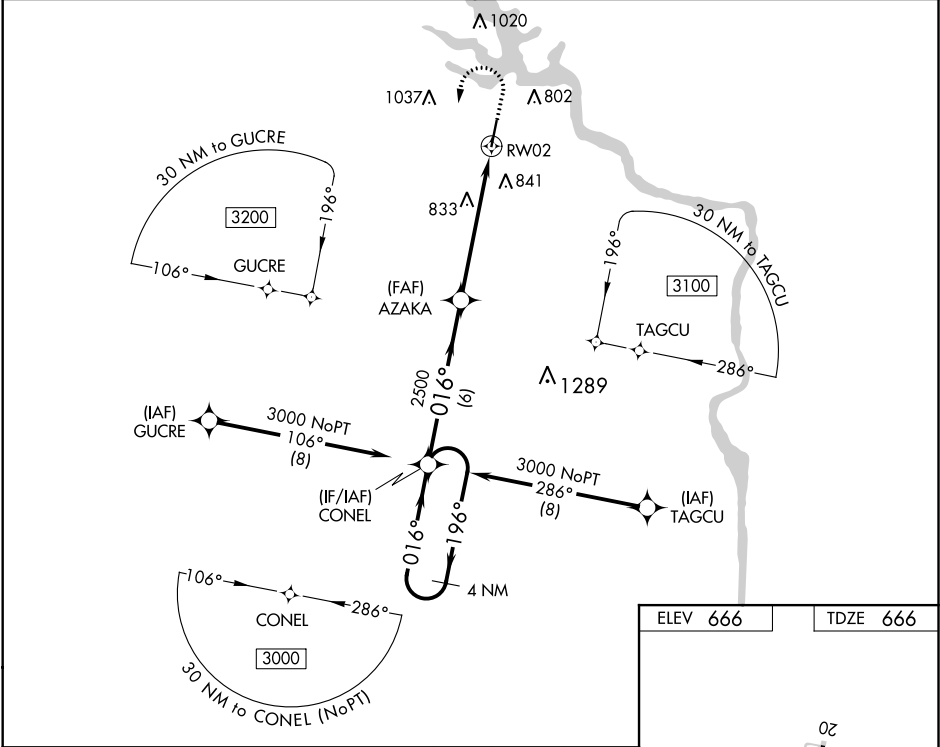
Baro-VNAV and VDP NA when using Charlotte/Douglas Intl altimeter setting. For uncompensated Baro-VNAV systems, LNAV/VNAV NA below -9°C (16°F) or above 54°C (130°F). DME/DME RNP-0.3 NA. When local altimeter setting not received, use Charlotte/Douglas Intl altimeter setting and increase all DA 45 feet and all MDA 60 feet. Increase LNAV/VNAV all Cats visibility ¼ mile and LNAV Cat C/D visibility ¼ mile.

MALSR

MISSED APPROACH:

Climb to 1600 then climbing left turn to 3000 direct CONEL and hold.

ASOS 120.775	CHARLOTTE APP CON 120.05 307.8	CLNC DEL 126.85	UNICOM 123.05 (CTAF) 0
------------------------	------------------------------------------	---------------------------	----------------------------------



4 NM Holding Pattern		CONEL		1600	3000	CONEL
3000 ← 196°		016° →				
GP 3.00° TCH 41		016°				
		2500				
		2500				
		6 NM				
		4.4 NM				
		1.2 NM				
CATEGORY	A	B	C	D		
LPV DA	866-½		200 (200-½)			
LNAV/VNAV DA	1022-¾		356 (400-¾)			
LNAV MDA	1100-½		434 (500-½)			
◻ CIRCLING	1140-1		1160-1			
	474 (500-1)		494 (500-1)			
	1340-2		1340-2			
	674 (700-2)		674 (700-2¼)			

