
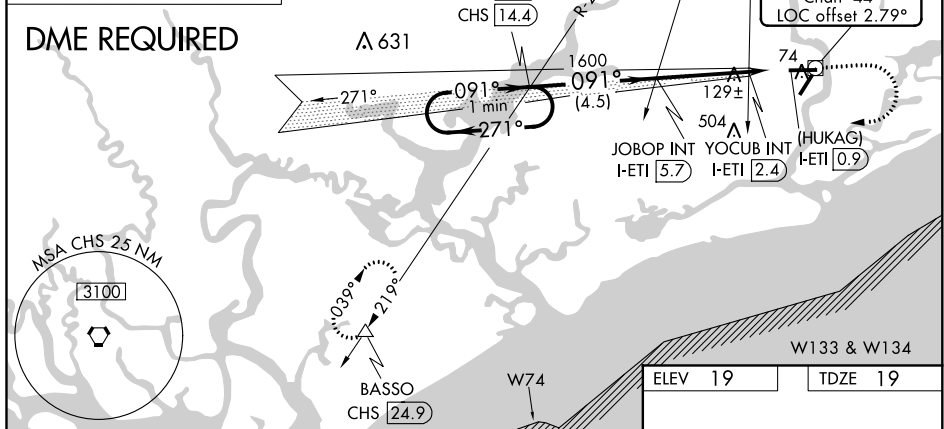


ILS or LOC RWY 9
CHARLESTON EXECUTIVE (JZT)

MISSED APPROACH: Climb to 1000 then climbing right turn to 3000 on heading 272° and on CHS VORTAC R-219 to BASSO/CHS 24.9 DME and hold.



DME REQUIRED



FAF to MAP 4.8 NM					
Knots	60	90	120	150	180
Min:Sec	4:48	3:12	2:24	1:55	1:36

SE-2, 03 DEC 2020 to 31 DEC 2020