

LOC/DME I-SOP	APP CRS	Rwy Idg	5502
111.5	054°	TDZE	455
Chan 52		Apt Elev	459

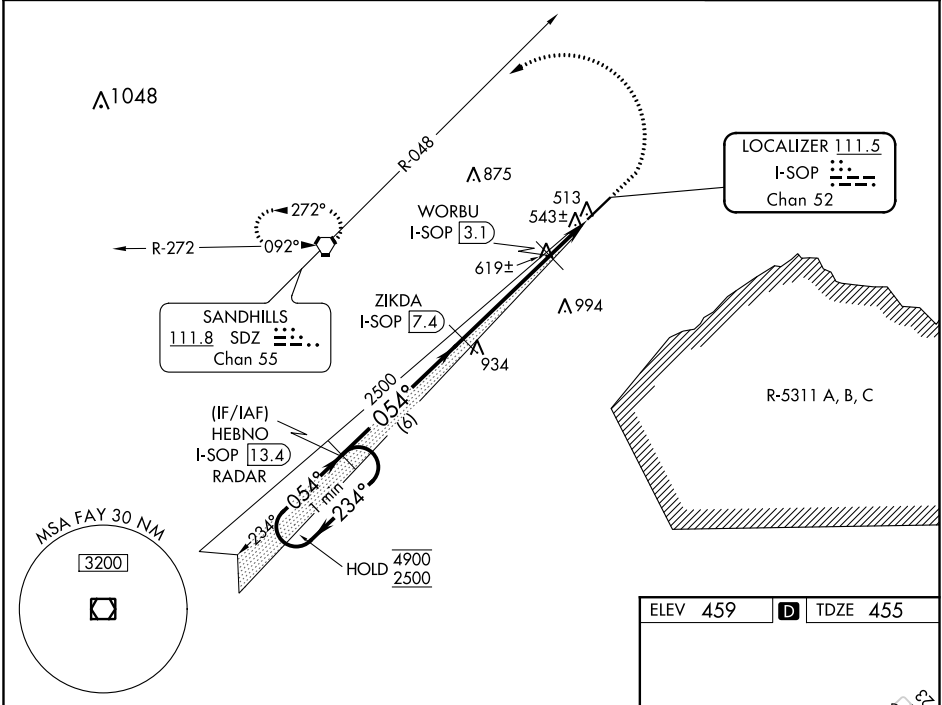
ILS Z or LOC Z RWY 5
MOORE COUNTY(SOP)

DME required.
RADAR required for procedure entry.

MALSR

MISSED APPROACH: Climb to 1400 then climbing left turn to 3300 on heading 300° and on SDZ VORTAC R-048 to SDZ VORTAC and hold.

AWOS-3PT 127.575	FAYETTEVILLE APP CON 127.8 343.725	CLNC DEL 127.0	UNICOM 123.05(CTAF) 1
---------------------	---------------------------------------	-------------------	--------------------------



One Minute Holding Pattern				
<div>HEBNO I-SOP 13.4 RADAR</div> <div>ZIKDA I-SOP 7.4</div> <div>WORBU I-SOP 3.1</div> <div>GS 3.00° TCH 39</div> <div>4900 2500 ← 234° → 054°</div> <div>2500</div> <div>2500</div> <div>2500</div> <div>1400 3300</div> <div>hdg 300°</div> <div>SDZ R-048</div> <div>SDZ</div> <div>*LOC only</div> <div>*I-SOP 2.1</div> <div>I-SOP 1.1</div> <div>*1120</div> <div>6 NM 4.3 NM 1 NM 1 NM</div>				
CATEGORY	A	B	C	D
S-ILS 5	655-½ 200 (200-½)			
S-LOC 5	800-½	345 (400-½)	800-⅝	345 (400-⅝)
CIRCLING	880-1 421 (500-1)	920-1 461 (500-1)	1100-1¼ 641 (700-1¼)	1360-3 901 (1000-3)

ELEV 459 D TDZE 455

REIL Rwy 23 1

HIRL Rwy 5-23 1

SE-2, 03 DEC 2020 to 31 DEC 2020

SE-2, 03 DEC 2020 to 31 DEC 2020