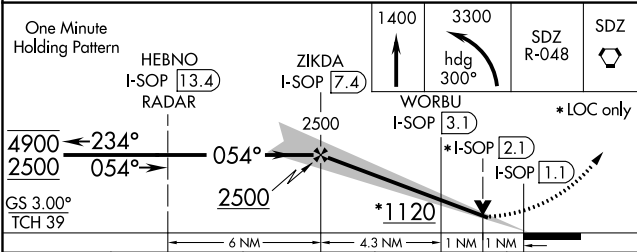
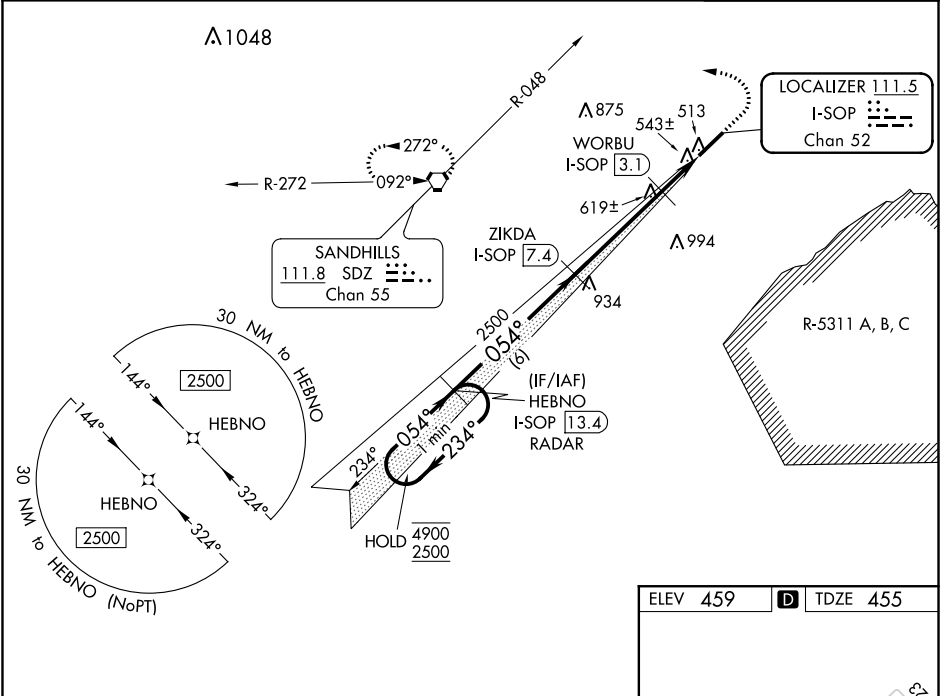


LOC/DME I-SOP	APP CRS	Rwy Idg	5502
111.5	054°	TDZE	455
Chan 52		Apt Elev	459

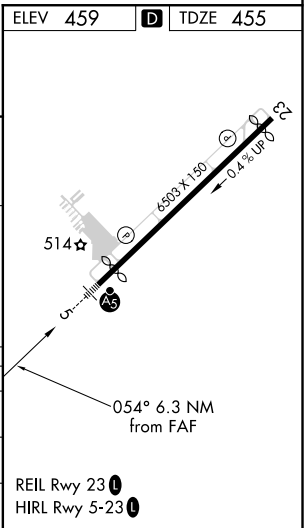
ILS Y or LOC Y RWY 5
MOORE COUNTY(SOP)

DME required. RNAV-1 GPS or RADAR required.	MALSR	MISSED APPROACH: Climb to 1400 then climbing left turn to 3300 on heading 300° and on SDZ VORTAC R-048 to SDZ VORTAC and hold.

AWOS-3PT 127.575	FAYETTEVILLE APP CON 127.8 343.725	CLNC DEL 127.0	UNICOM 123.05(CTAF) 0
---------------------	---------------------------------------	-------------------	--------------------------



CATEGORY	A	B	C	D
S-ILS 5	655-1/2	200 (200-1/2)		
S-LOC 5	800-1/2	345 (400-1/2)	800-5/8	345 (400-5/8)
CIRCLING	880-1 421 (500-1)	920-1 461 (500-1)	1100-1 3/4 641 (700-1 3/4)	1360-3 901 (1000-3)



SE-2, 03 DEC 2020 to 31 DEC 2020

SE-2, 03 DEC 2020 to 31 DEC 2020