

VORTAC IRQ 113.9 Chan 86	APP CRS 102°	Rwy Idg TDZE Apt Elev	N/A N/A 528
--	------------------------	-----------------------------	--

VOR/DME-A
AIKEN RGNL(AIK)

T
A NA When local altimeter setting not received, use Augusta Rgnl at Bush Field altimeter setting and increase all MDA 120 feet and increase Cat D visibility $\frac{1}{4}$ mile.

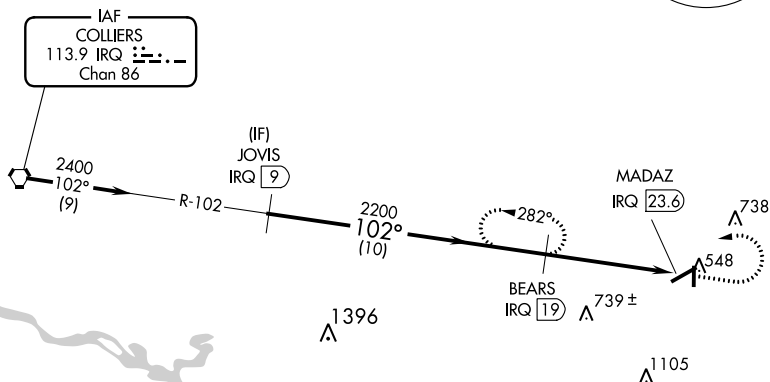
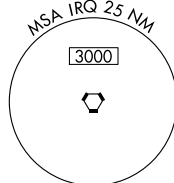
MISSED APPROACH: Climb to 1 600 then climbing left turn to 2 400 on IRQ VORTAC R-102 to BEARS/IRQ 19 DME and hold.

AWOS-3
118.025

AUGUSTA APP CON ★
119.15 284.625

CLNC DEL
126.075UNICOM
122.8 (CTAF) **L**

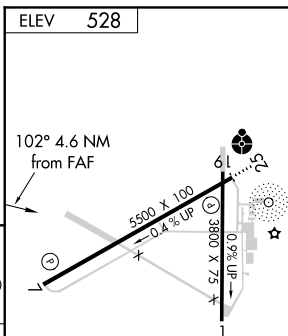
Procedure NA for arrivals at IRQ VORTAC
on airway radials 062 CW 154.



The diagram illustrates the orbits of the four Galilean moons of Jupiter. The central body is JUPITER. The moons are shown in their respective orbits, with their names and orbital periods in days (D) and hours (H) listed in a table. The table is as follows:

MOON	PERIOD (D)	PERIOD (H)
IO	1.769	42.2
EUROPA	3.855	92.8
GANYMEDE	7.155	172.0
CALLISTO	16.69	400.8

The diagram also shows the relative positions of the moons at a specific time. The moons are labeled with their names and orbital periods in days (D) and hours (H). The diagram shows the moons' positions relative to Jupiter, with the distance between the moons and Jupiter indicated by a scale bar. The scale bar shows distances of 10 NM and 4.6 NM. The diagram also shows the moons' relative positions at a specific time, with the moons labeled with their names and orbital periods in days (D) and hours (H).



REIL Rwy 25
MIRL Rwy 7-25 **L**