

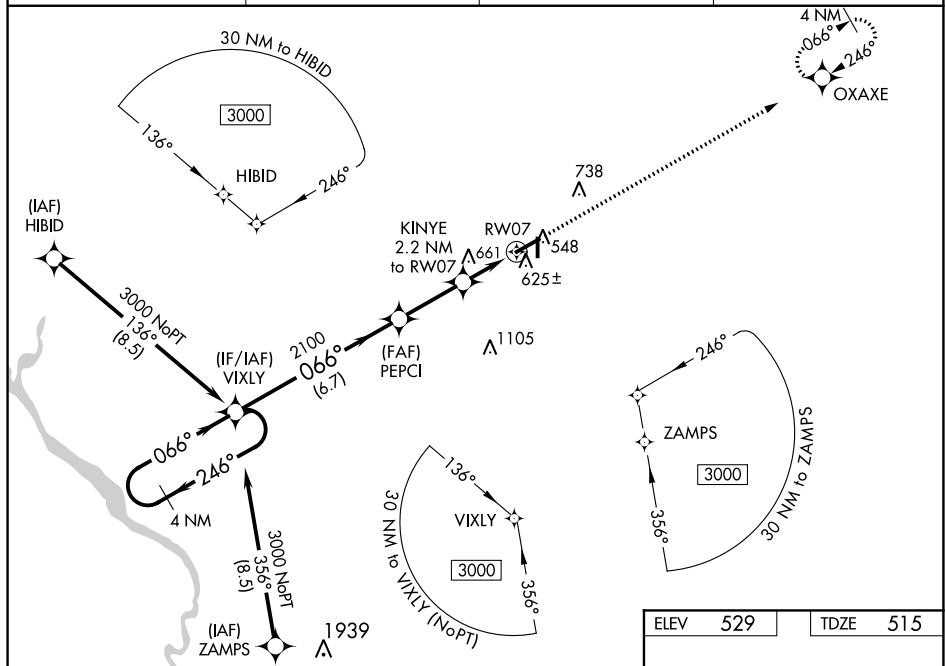
WAAS CH 90301 W07A	APP CRS 066°	Rwy Idg 5500 TDZE 515 Apt Elev 529
--	------------------------	---

RNAV (GPS) RWY 7
AIKEN RGNL (AIK)

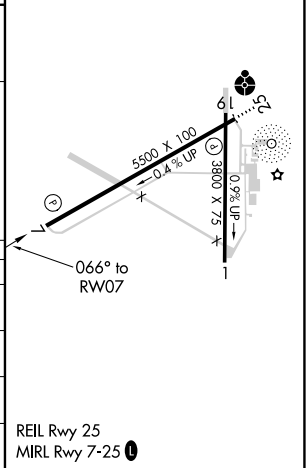
NA Baro-VNAV NA when using Augusta Rgnl at Bush Field altimeter setting. For uncompensated Baro-VNAV systems, LNAV/VNAV NA below -1.6°C (4°F) or above 40°C (104°F). DME/DME RNP-0.3 NA. VDP NA with Augusta Rgnl at Bush Field altimeter setting. When local altimeter setting not received, use Augusta Rgnl at Bush Field altimeter setting: increase LPV all Cats DA to 819 feet, LNAV/VNAV all Cats DA to 890 feet, LPV all Cats visibility $\frac{1}{4}$ mile and LNAV/VNAV all Cats $\frac{3}{8}$ mile; increase all MDA 120 feet and LNAV Cat C/D visibility $\frac{1}{2}$ mile and Circling Cat D $\frac{1}{4}$ mile.

MISSED APPROACH:
Climb to 2500 direct
OXAXE and hold.

AWOS-3 118.025	AUGUSTA APP CON ★ 119.15 284.625	CLNC DEL 126.075	UNICOM 122.8 (CTAF) 0
--------------------------	--	----------------------------	--



ELEV	529		TDZE	515
------	-----	--	------	-----



CATEGORY	A	B	C	D
LPV DA	715- ³ / ₄ 200 (200- ³ / ₄)			
LNAV/VNAV DA	786- ⁷ / ₈ 271 (300- ⁷ / ₈)			
LNAV MDA	920-1 405 (400-1)		920-1 ¹ / ₈ 405 (400-1 ¹ / ₈)	
CIRCLING	980-1 451 (500-1)	1000-1 471 (500-1)	1000-1 ¹ / ₂ 471 (500-1 ¹ / ₂)	1080-2 551 (600-2)