

ILS or LOC RWY 23
SUMTER (SMS)

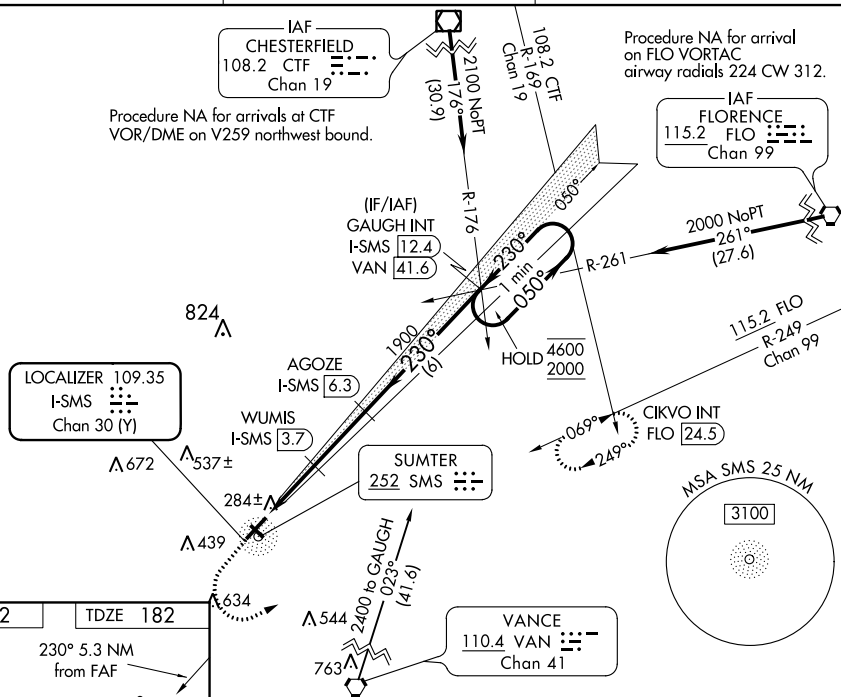
	T A
--	--------

ODALS



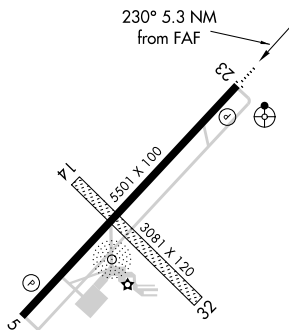
MISSED APPROACH: Climb to 700 then climbing left turn to 2000 on heading 040° and FLO VORTAC R-249 to CIKVO INT/FLO 24.5 DME and hold.

SHAW APP CON ★
125.4

UNICOM
122.7 (CTAF) **L**

ELEV 182		TDZE 182
----------	--	----------

230° 5.3 NM
from FAF



700 ↑	2000 hdg 040°	FLO R-249	CIKVO INT	AGOZE I-SMS 6.3	GAUGH I-SMS 12.4	One Minute Holding Pattern
*LOC only.				WUMIS I-SMS 3.7	1900	050° → 4600 ← 230° 2000

MIRL Rwy 5-23 **L**
REIL Rwy 5 and 23 **L**

SUMTER (SMS)
ILS or LOC RWY 23