

| | | |
|--|------------------------|--|
| WAAS CH 78103 W04A | APP CRS 038° | Rwy Idg 11001 TDZE 947 Apt Elev 964 |
|--|------------------------|--|

RNAV (GPS) RWY 4
GREENVILLE SPARTANBURG INTL (GSP)

RNP APCH.

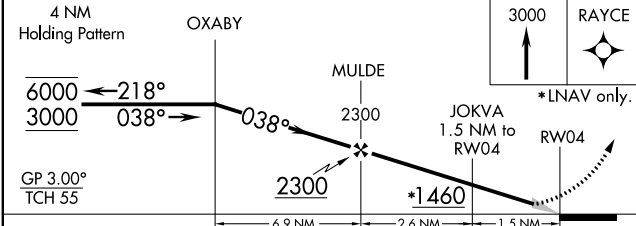
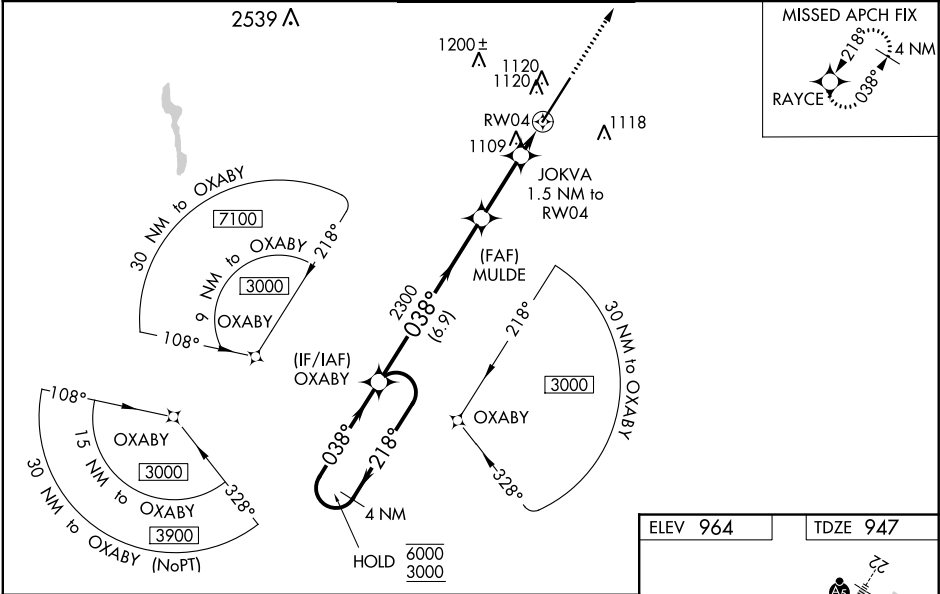
⚠ For uncompensated Baro-VNAV systems, LNAV/VNAV NA below 10°C or above 54°C. For inop ALS, increase LNAV/VNAV all Cats visibility to 1½ SM and increase LNAV Cat C/D visibility to RVR 6000. When local altimeter setting not received, use Greenville Downtown altimeter setting; increase LPV DA to 1176 feet and LNAV/VNAV DA to 1450 feet and all Cats visibility to RVR 5500; increase all MDAs 40 feet and visibility LNAV Cats C and D to RVR 4500 and Circling Cat D visibility ¼ SM. For inop ALS, when using Greenville Downtown altimeter setting, increase LNAV/VNAV all Cats visibility to 1½ SM. Baro-VNAV NA when using Greenville Downtown altimeter setting.

ALSF-2

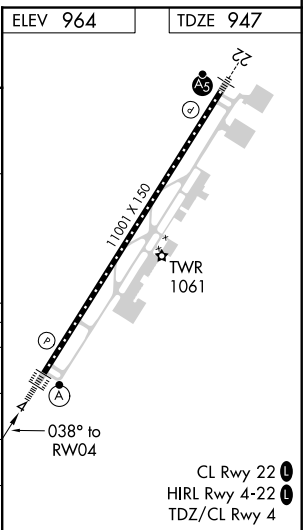


MISSED APPROACH:
Climb to 3000 direct
RAYCE and hold.

| | | | | |
|-----------------------|--|---|-------------------------|-------------------------|
| ATIS 134.25 | GREER APP CON★ 118.8 270.275 | GREER TOWER★ 120.1(CTAF) 251.15 | GND CON 121.9 | UNICOM 122.95 |
|-----------------------|--|---|-------------------------|-------------------------|



| CATEGORY | A | B | C | D |
|--------------|---------|-------------|-------------------------|-------------------------|
| LPV DA | | 1147/18 | 200 (200-½) | |
| LNAV/VNAV DA | | 1421/50 | 474 (500-1) | |
| LNAV MDA | 1360/24 | 413 (500-½) | 1360/40 | 413 (500-¾) |
| CIRCLING | 1440-1 | 476 (500-1) | 1480-1½ 516 (600-1½) | 1700-2¼ 736 (800-2¼) |



SE-2, 03 DEC 2020 to 31 DEC 2020

SE-2, 03 DEC 2020 to 31 DEC 2020