

WAAS CH <b>82004</b> <b>W05A</b>	APP CRS <b>050°</b>	Rwy ldg <b>10960</b> TDZE <b>93</b> Apt Elev <b>93</b>
--	------------------------	--

RNAV (GPS) RWY 5

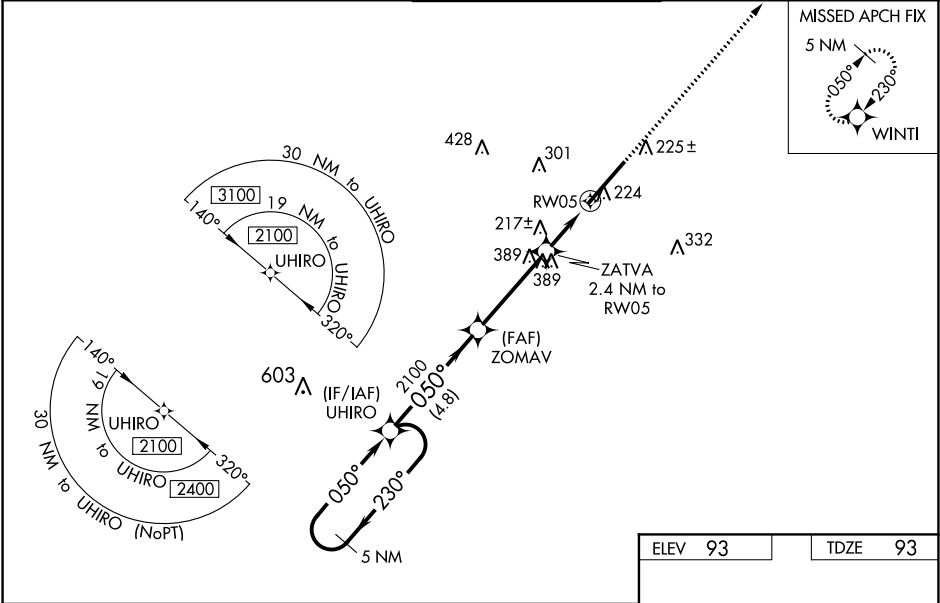
KINSTON RGNL JETPORT AT STALLINGS FIELD (ISO)

Baro-VNAV NA when using Seymour Johnson AFB altimeter setting. For uncompensated Baro-VNAV systems, LNAV/VNAV NA below -15°C (5°F) or above 54°C (130°F).  
DME/DME RNP-0.3 NA. VDP NA when using Seymour Johnson AFB altimeter setting. When local altimeter setting not received, use Seymour Johnson AFB altimeter setting and increase all DAs 43 feet and all MDAs 60 feet. Increase LNAV/VNAV all Cats visibility to RVR 2600, increase LNAV Cats C and D visibility to RVR 4000, and Circling Cat D visibility to 2¼mile. For inop MALSR, increase LNAV/VNAV all Cats visibility to RVR 4500 and LNAV Cats A and B visibility to RVR 5500 and Cats C and D to RVR 6000. For inop MALSR when using Seymour Johnson AFB altimeter setting, increase LNAV Cats A and B visibility to RVR 5500 and Cats C and D to 1½ mile.

MALSR

MISSED APPROACH: Climb to 2500 direct WINTI and hold.

AWOS-3 <b>132.75</b>	SEYMOUR JOHNSON APP CON ★ <b>127.3 273.6</b>	KINSTON TOWER ★ <b>120.6 (CTAF) 0 335.55</b>	GND CON <b>121.9</b>	UNICOM <b>122.95</b>
-------------------------	---	---	-------------------------	-------------------------



5 NM Holding Pattern		UHIRO	ZOMAV	ZATVA	RW05	2500	WINTI
2100		2100	2100	2100	2100	2100	2100
GP 3.00°							
TCH 59							
		4.8 NM	3.7 NM	1.4 NM	1 NM		
CATEGORY		A	B	C	D		
LPV DA		293/24		200 (200-½)			
LNAV/VNAV DA		368/24		275 (300-½)			
LNAV MDA		480/24	387 (400-½)	480/35	387 (400-¾)		
CIRCLING		580-1	487 (500-1)	700-1¾ 607 (700-1¾)	740-2 647 (700-2)		

ELEV 93

TDZE 93

REIL Rwy 23 0

HIRL Rwy 5-23 0

050° to RW05

TWR 173

11500 X 150