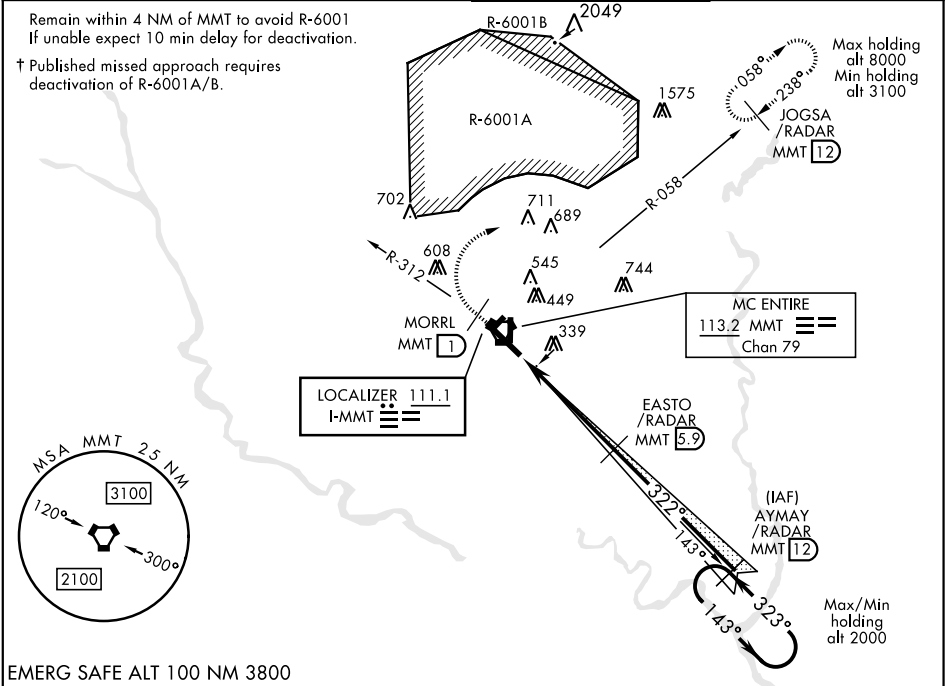


EASTOVER, SOUTH CAROLINA

ILS or LOC/DME RWY 32

LOC I-MMT 111.1	APCH CRS 322°	Rwy ldg TDZE Arpt Elev 9009 243 254	AL-951 [USAF]	MC ENTIRE JNGB (KMMT)
* When ALS inop, increase CAT ABCDE RVR to 40, and vis to ¾ mile. ** When ALS inop, increase CAT ABCDE RVR to 55, and vis to 1 mile.			ALSF-1	† MISSED APPROACH: Climb to 1100 direct MORRL/ 1 DME then climbing right to 3100 intercept MMT R-058 direct JOGSA/12 DME and hold.

ATIS 327.05	SHAW APP CON 125.4 318.1	MC ENTIRE TOWER ★ 132.4 (CTAF) 253.5	GND CON 127.625 226.675
-----------------------	------------------------------------	--	-----------------------------------



EMERG SAFE ALT 100 NM 3800

1100 MORRL 1	3100 MMT R-058	JOGSA /RADAR MMT 12				ELEV 254 TDZE 243
CATEGORY	A	B	C	D	E	
S-ILS 32 *	443/24 200 (200-½)					
S-LOC 32 **	620/24 377 (400-½)	620/35 377 (400-¾)				
CIRCLING	740-1 486 (500-1)	840-1 586 (600-1)	880-1¾ 626 (700-1¾)	940-2¼ 686 (700-2¼)	1020-2¾ 766 (800-2¾)	
FAF to MAP 4.5 NM						
Rwy 5H-23H, COPTER ONLY. HIRL Rwy 14-32 MIRL Rwy 5H-23H REIL Rwy 14						
Knots						
Min:Sec						

EASTOVER, SOUTH CAROLINA

Amtd 4 25MAY17

33°55'N-80°48'W

MC ENTIRE JNGB (KMMT)

ILS or LOC/DME RWY 32

SE-2, 03 DEC 2020 to 31 DEC 2020