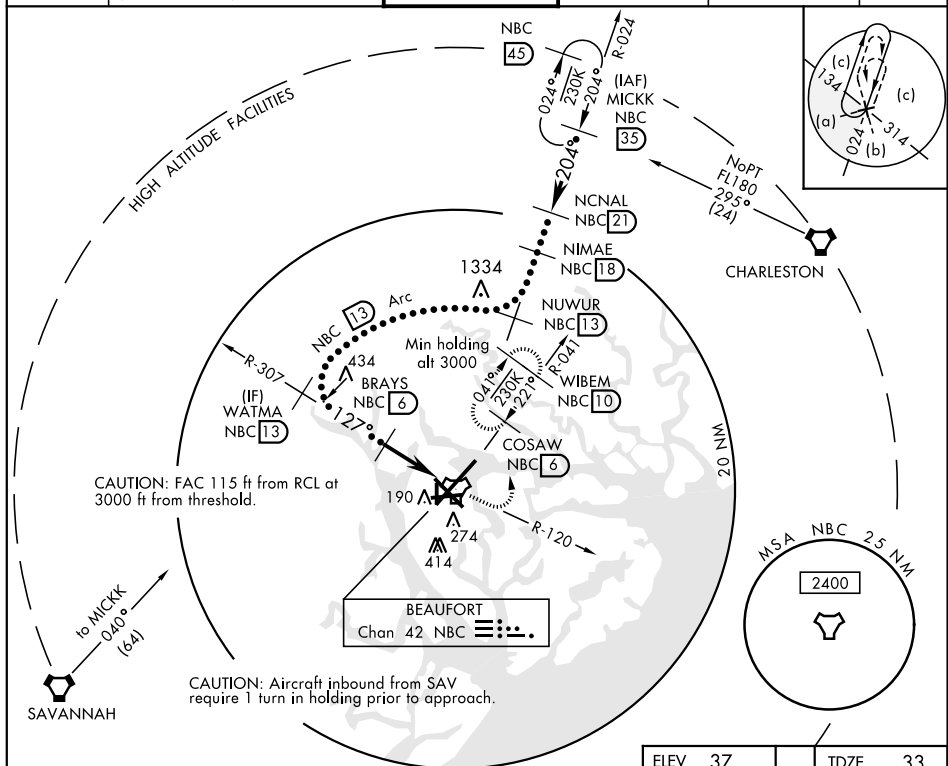


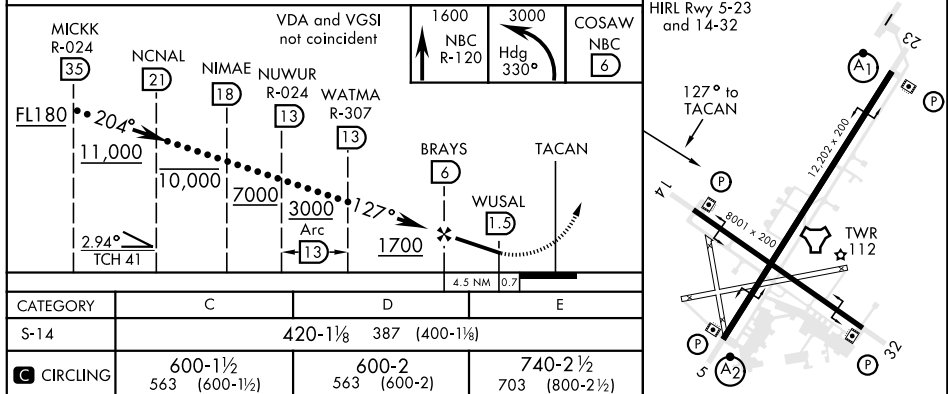
BEAUFORT, SOUTH CAROLINA

HI-TACAN Z RWY 14

TACAN NBC Chan 42		APCH CRS 127°	Rwy Idg 8001 TDZE 33 Arpt Elev 37	JAL-916 [USN]		BEAUFORT MCAS (MERRITT FLD) (KNBC)	
RADAR Required ▼			MISSED APPROACH: Climb to 1600 on NBC TACAN R-120, then climbing left turn to 3000 via hdg 330° to intercept NBC R-041 to 6 DME (COSAW) and hold. Continue climb in hold to 3000.				
ATIS ★ 279.525	BEAUFORT APP CON (ABV 3000) 125.125 292.125 (3000 and BLW) 123.7 269.125		BEAUFORT TOWER ★ 119.05 342.875		GND CON 128.15 348.625	CLNC DEL 128.15 254.375	ASR/PAR



EMERG SAFE ALT 100 NM 3100



BEAUFORT, SOUTH CAROLINA

32° 29'N-80° 43'W

BEAUFORT MCAS (MERRITT FLD) (KNBC)

Amdt 2 01FEB18

HI-TACAN Z RWY 14