

JACKSONVILLE, NORTH CAROLINA

RNAV (GPS) RWY 1

APCH CRS	Rwy ldg	4789
008°	THRE	24
	Arpt Elev	26

AL-732 [USN] NEW RIVER MCAS (MC CUTCHEON FLD)(KNCA)

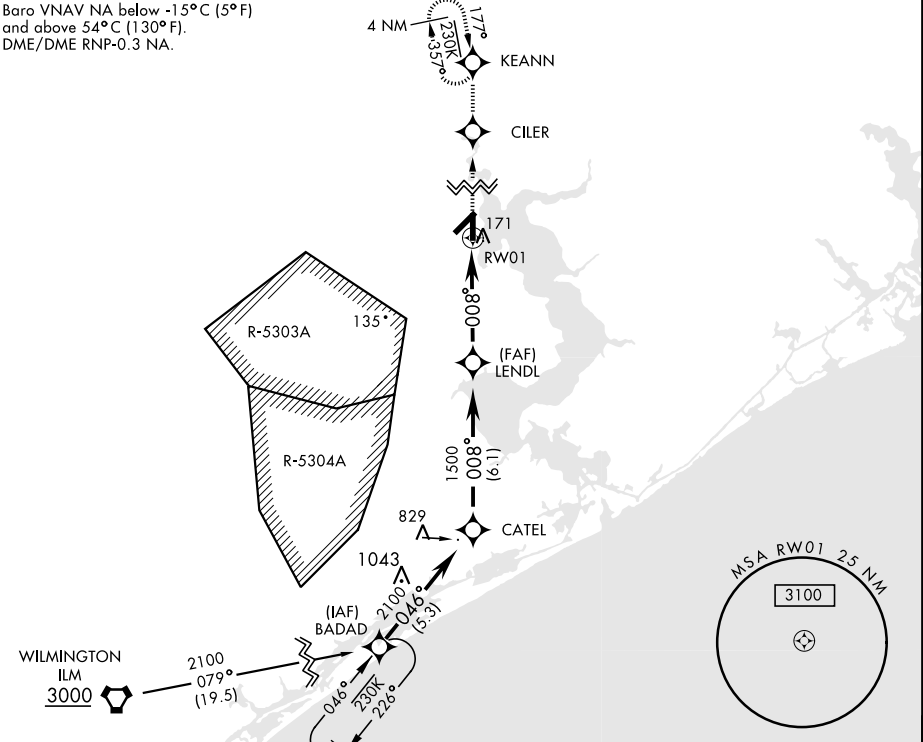
▼ * When ALS inop, increase vis CAT AB to 7/8 mile, CD to 1 mile.
** When ALS inop, increase vis CAT AB to 1 mile, CAT CD to 1 1/2 miles.



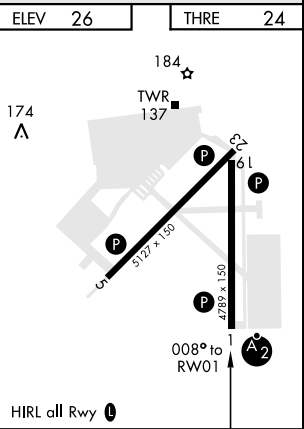
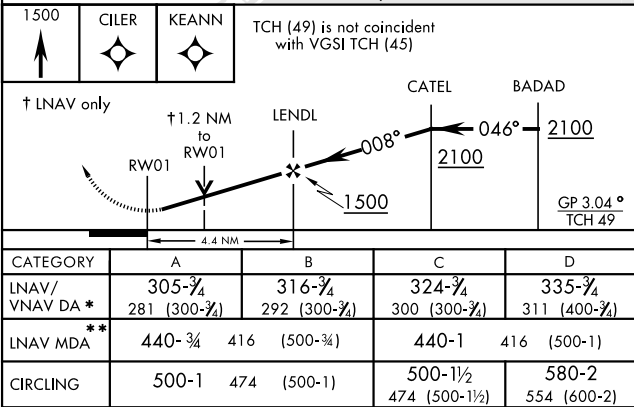
MISSED APPROACH: Climb to 1500 direct CILER, 008° track to KEANN and hold.

ATIS ★ 288.325	CHERRY POINT APP CON 119.35 377.175	NEW RIVER TOWER★ 120.00★ 360.2	GND CON 121.8 254.275	CLNC DEL 269.25	ASR/PAR
-------------------	--	-----------------------------------	--------------------------	--------------------	---------

Baro VNAV NA below -15°C (5°F)
and above 54°C (130°F).
DME/DME RNP-0.3 NA.



EMERG SAFE ALT 100 NM 3400



JACKSONVILLE, NORTH CAROLINA

Amtdt 2 22JUN17

34° 43' N-77° 26' W

NEW RIVER MCAS (MC CUTCHEON FLD)(KNCA)

RNAV (GPS) RWY 1

SE-2, 03 DEC 2020 to 31 DEC 2020

SE-2, 03 DEC 2020 to 31 DEC 2020