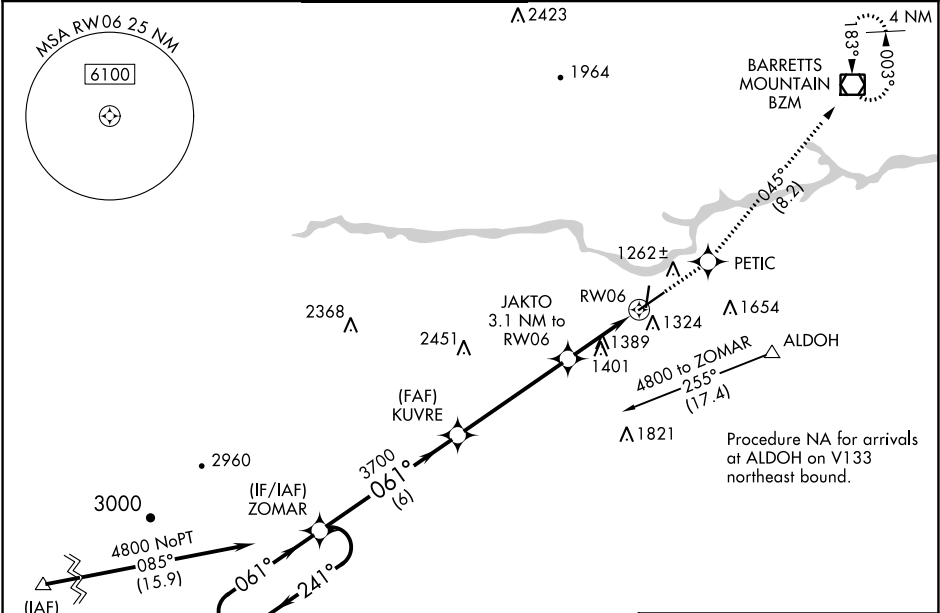


WAAS CH 82623 W06A	APP CRS 061°	Rwy Idg 6401 TDZE 1152 Apt Elev 1190	RNAV (GPS) RWY 6 HICKORY RGNL (HKY)
--	------------------------	---	---

▼ DME/DME RNP-0.3 NA. When local altimeter setting not received, use Morganton altimeter setting and increase all MDA 40 feet; increase LNAV and LP Cat C/D and Circling Cat C visibility 1/8 mile. When VGSI inop, Straight-in/Circling Rwy 6 procedure NA at night. When VGSI inop, Circling Rwy 1 and 19 NA at night. Rwy 1, 6, 19 helicopter visibility reduction below 1 SM NA.

▲ MISSED APPROACH: Climb to 4000 direct PETIC and on track 045° to BZM VOR/DME and hold.

ASOS 118.325	ATLANTA CENTER 125.15 263.0	HICKORY TOWER ★ 128.15 (CTAF) 0	GND CON 121.7	CLNC DEL 121.7	CLNC DEL 124.25 (When twr closed)
------------------------	---------------------------------------	---	-------------------------	--------------------------	--



Procedure NA for arrivals at GENOD on V20-222 southwest bound and V605 southbound.

Procedure NA for arrivals at ALDOH on V133 northeast bound.

VGSI and descent angles not coincident (VGSI Angle 3.00/TCH 57).		4000	PETIC	tr 045°	BZM
5 NM Holding Pattern ZOMAR		↑	✱		▣
4800	← 241°	061° →	061°	KUVRE	
		3.00° TCH 50	JAKTO 3.1 NM to RW06	RW06	
		3700	2160		
		6 NM	4.8 NM	3.1 NM	
CATEGORY	A	B	C	D	
LP MDA	1560-1	408 (400-1)	1560-1¼	408 (400-1¼)	HIRL Rwy 6-24 1
LNAV MDA	1740-1	588 (600-1)	1740-1¾	588 (600-1¾)	MIRL Rwy 1-19 1
CIRCLING	1740-1	550 (600-1)	1740-1¾	1740-2	REIL Rwy 1 1
			550 (600-1¾)	550 (600-2)	REIL Rws 6 and 19

ELEV 1190 | TDZE 1152