

WAAS CH <b>42921</b> <b>W24A</b>	APP CRS <b>241°</b>	Rwy Idg TDZE <b>1190</b> Apt Elev <b>1190</b>
--	------------------------	---

RNAV (GPS) RWY 24

HICKORY RGNL (HKY)

RNP APCH

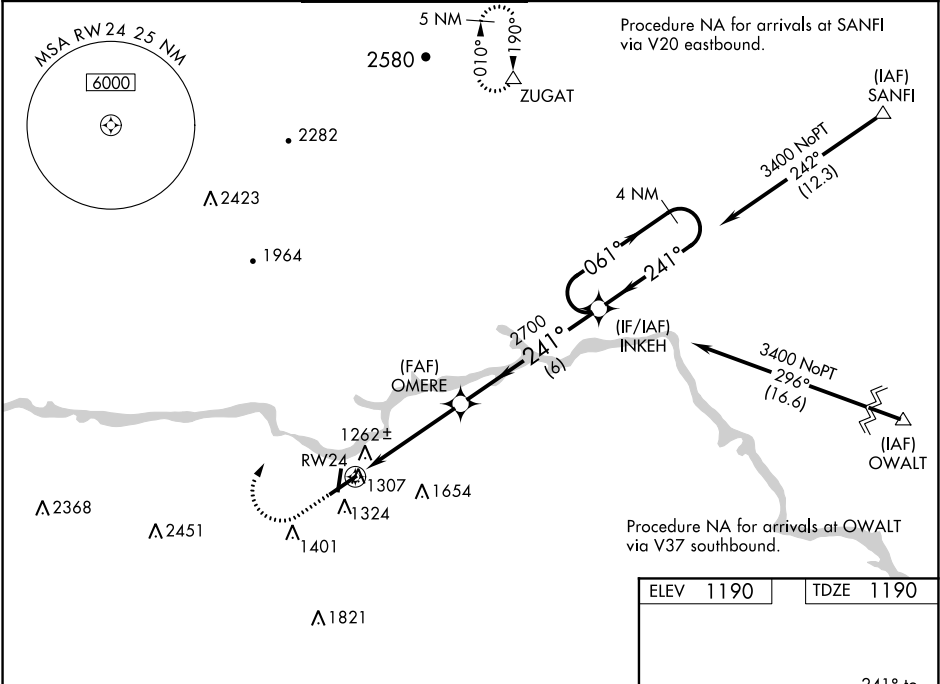
▼ Baro-VNAV NA when using Morganton altimeter setting. For uncompensated Baro-VNAV systems, LNAV/VNAV NA below -17°C (2°F) or above 36°C (96°F). When local altimeter setting not received, use Morganton altimeter setting and increase all DA 39 feet and all MDA 40 feet; increase LNAV/VNAV all Cats and LNAV Cats C/D visibility ½ mile.

▲ Circling Rwy 1, 6, 19 NA at night. VDP NA with Morganton altimeter setting. For inop MALSRS, increase LNAV/VNAV all Cats visibility to ¾ mile.

MALSRS

MISSED APPROACH:  
Climb to 2000 then climbing right turn to 5400 direct ZUGAT and hold, continue climb-in-hold to 5400.

ASOS <b>118.325</b>	ATLANTA CENTER <b>125.15 263.0</b>	HICKORY TOWER ★ <b>128.15 (CTAF) 0</b>	GND CON <b>121.7</b>	CLNC DEL <b>121.7</b>	CLNC DEL <b>124.25</b> (When twr closed)
------------------------	---------------------------------------	---	-------------------------	--------------------------	--



2000	5400	ZUGAT		
<p>*LNAV only.</p> <p></p>				
CATEGORY	A	B	C	D
LPV DA	1390-½ 200 (200-½)			
LNAV/VNAV DA	1468-½ 278 (300-½)			
LNAV MDA	1580-½ 390 (400-½)	1580-⅝ 390 (400-⅝)		
CIRCLING	1640-1 450 (500-1)	1640-1½ 450 (500-1½)	1740-2 550 (600-2)	

