

VOR/DME ECG

112.5

Chan 72

APP CRS

184°

Rwy Idg

4518

TDZE

10

Apt Elev

11

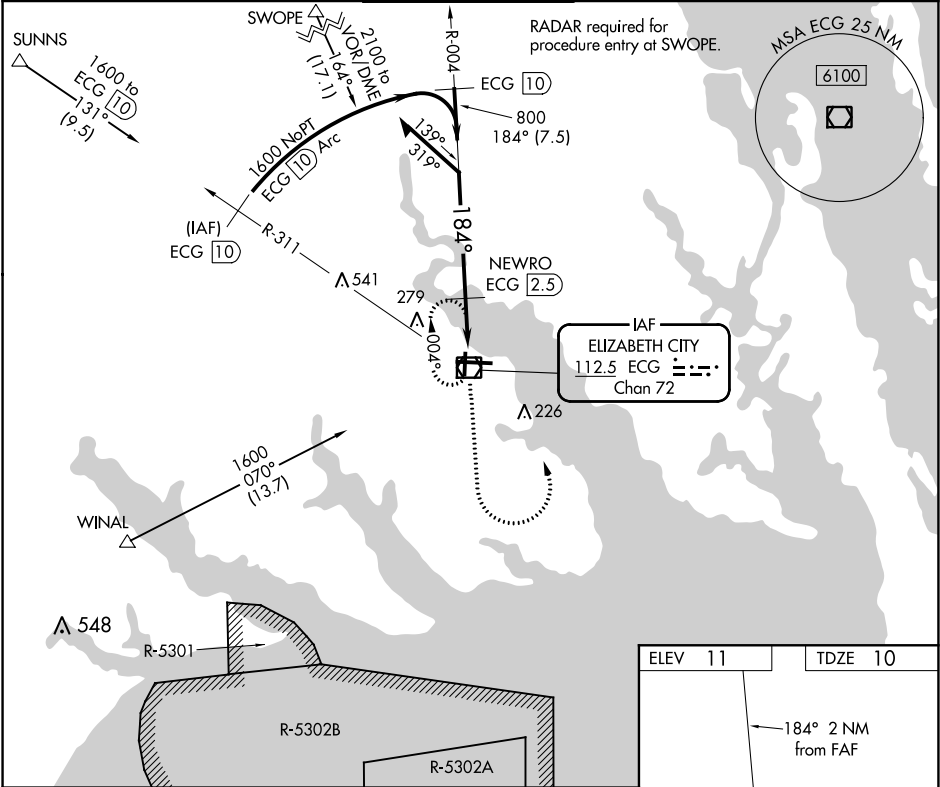
ELIZABETH CITY COAST GUARD AIR STATION/RGNL (ECG)

VOR/DME RWY 19

Procedure NA when tethered balloon located approximately 2 miles southeast of airport is flying. When local altimeter setting not received, use Currituck altimeter setting and increase all MDAs 40 feet and increase S-19 Cat C visibility ¼ SM and Circling Cat C visibility ¼ SM.

MISSED APPROACH: Climb to 1600 then left turn direct ECG VOR/DME and hold.

| | | | | |
|-----------------|-----------------------------------|--|------------------|------------------|
| ASOS 124.375 | NORFOLK APP CON 119.55 269.425 | ELIZABETH CITY TOWER★ 120.5(CTAF) 355.6 | GND CON 121.9 | UNICOM 122.95 |
|-----------------|-----------------------------------|--|------------------|------------------|



VGSI and descent angles not coincident (VGSI Angle 2.75/TCH 30).

Remain within 10 NM

1600

NEWRO ECG 2.5

800

3.49°

TCH 59

2 NM

0.5

ECG VOR/DME

1600

ECG

| CATEGORY | A | B | C | D |
|----------|-------------------|---|---------------------|---------------------|
| S-19 | 480-1 470 (500-1) | | 480-1¼ 470 (500-1¼) | 480-1½ 470 (500-1½) |
| CIRCLING | 480-1 469 (500-1) | | 580-1½ 569 (600-1½) | 640-2 629 (700-2) |

ELEV 11

TDZE 10

184° 2 NM from FAF

61

TWR 90

7219 X 150

10

28

0.4518 X 150

TDZ/CL Rwy 10

MIRL Rwy 1-19

HIRL Rwy 10-28

REIL Rws 10 and 28