

APP CRS  
**193°**

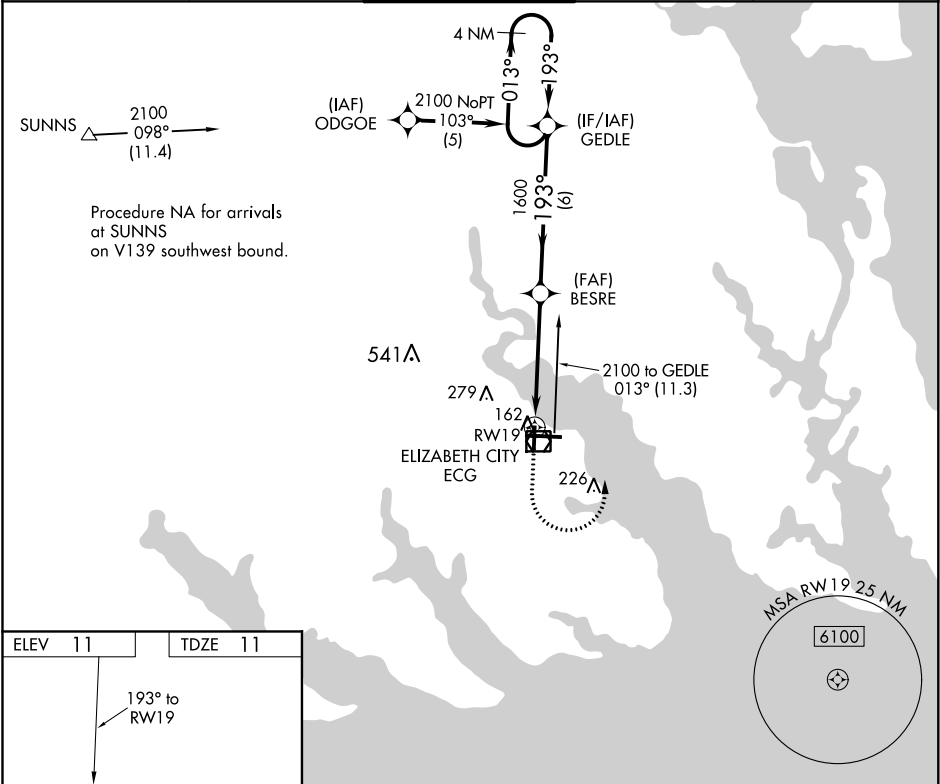
Rwy Idg  
TDZE  
**11**

Apt Elev  
**11**

ELIZABETH CITY COAST GUARD AIR STATION/RGNL (ECG)

RNAV (GPS) RWY 19

RNP APCH.		MISSED APPROACH: Climb to 900 then climbing left turn to 2100 direct GEDLE and hold.		
ASOS <b>124.375</b>	NORFOLK APP CON <b>119.55 269.425</b>	ELIZABETH CITY TOWER★ <b>120.5(CTAF) 355.6</b>	GND CON <b>121.9</b>	UNICOM <b>122.95</b>



ELEV 11

TDZE 11

900

2100

GEDLE

VGSI and descent angles not coincident (VGSI Angle 2.75/TCH 30).

4 NM Holding Pattern

1.5 NM to RW19

3.04° TCH 45

1.5

3.3 NM

6 NM

CATEGORY	A	B	C	D
LNAV MDA	480-1	469 (500-1)	480-1 <sup>3</sup> / <sub>8</sub>	469 (500-1 <sup>3</sup> / <sub>8</sub> )
CIRCLING	480-1	469 (500-1)	640-1 <sup>3</sup> / <sub>4</sub> 629 (700-1 <sup>3</sup> / <sub>4</sub> )	640-2 629 (700-2)

TDZ/CL Rwy 10

MIRL Rwy 1-19

HIRL Rwy 10-28

REIL Rwy 10 and 28