

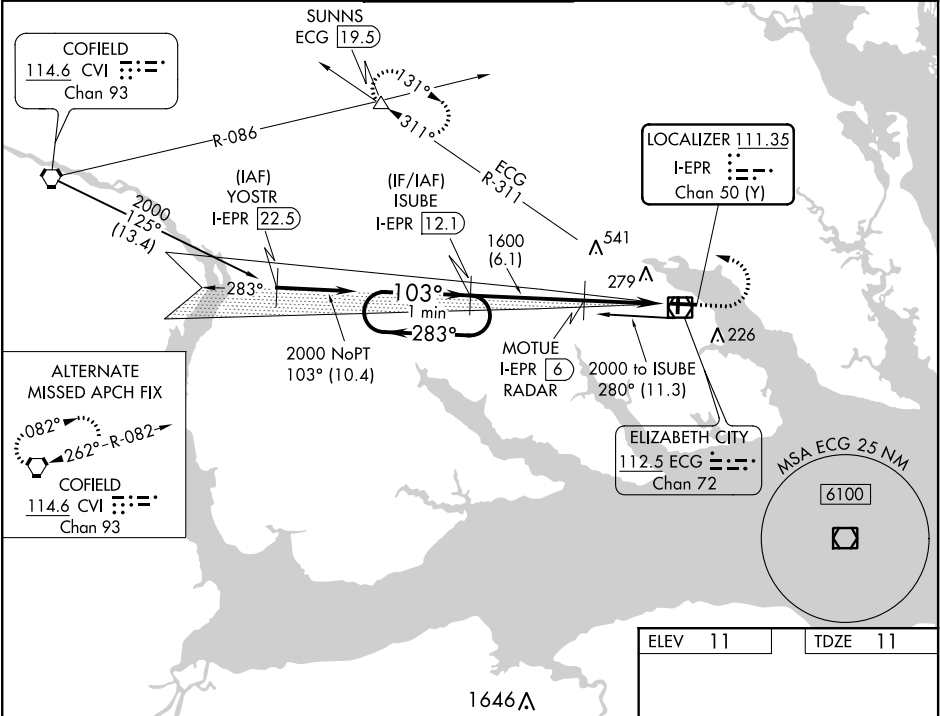
LOC/DME I-EPR 111.35 Chan 50 (Y)	APP CRS 103°	Rwy Idg 7219 TDZE 11 Apt Elev 11	ELIZABETH CITY COAST GUARD AIR STATION/RGNL (ECG)	ILS or LOC RWY 10
--	------------------------	---	---	-------------------

DME Required.

Procedure NA when tethered balloon located approximately 2 miles southeast of airport is flying.

MISSED APPROACH: Climb to 500 then climbing left turn to 3000 on heading 281° and ECG VOR/DME R-311 to SUNNS INT/ECG 19.5 DME and hold.

ASOS 124.375	NORFOLK APP CON 119.55 269.425	ELIZABETH CITY TOWER ★ 120.5 (CTAF) 355.6	GND CON 121.9	UNICOM 122.95
------------------------	--	---	-------------------------	-------------------------



VGSI and ILS glidepath not coincident (VGSI Angle 3.00/TCH 49).

One Minute Holding Pattern

ISUBE I-EPR 12.1

MOTUE I-EPR 6 RADAR

500 3000 ECG R-311 SUNNS

103° 4.7 NM from FAF

61 TWR 90

7219 X 150

4518 X 150

28

TDZ/CL Rwy 10

MIRL Rwy 1-19

HIRL Rwy 10-28

REIL Rwys 10 and 28

FAF to MAP 4.7 NM

Knots	60	90	120	150	180
Min:Sec	4:42	3:08	2:21	1:53	1:34

CATEGORY	A	B	C	D
S-ILS 10	234-¾		223 (300-¾)	
S-LOC 10	460-1 449 (500-1)		460-1⅓ 449 (500-1⅓)	
CIRCLING	480-1 469 (500-1)		580-1½ 569 (600-1½) 580-2 569 (600-2)	