

APP CRS
054°

Rwy Idg **10000**
TDZE **384**
Apt Elev **435**

RNAV (RNP) Z RWY 5L
RALEIGH-DURHAM INTL (RDU)

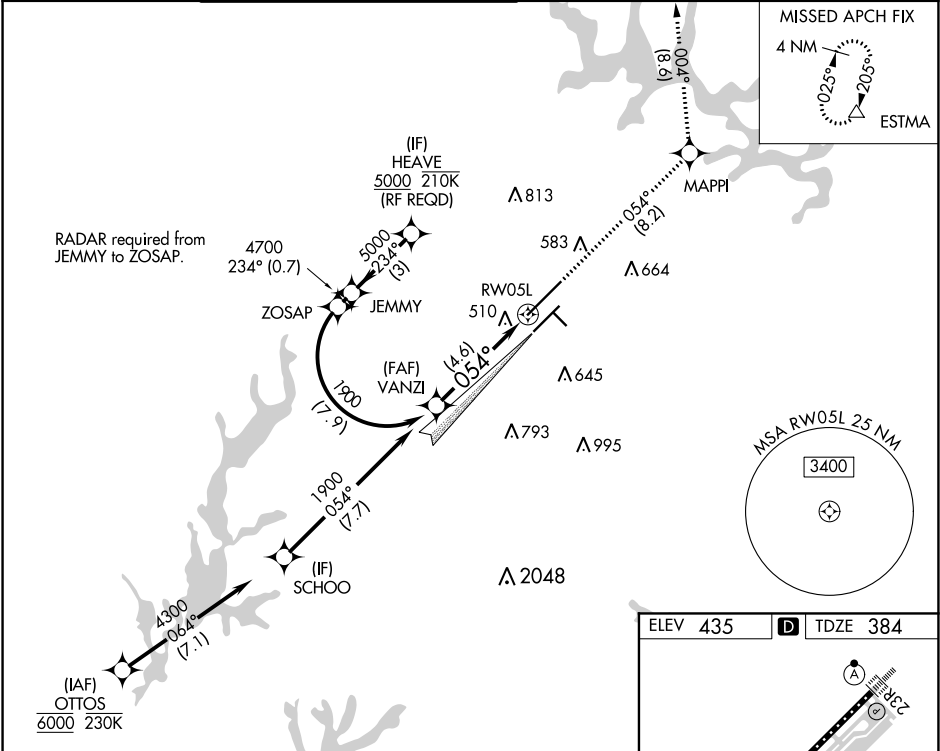
RNP AR APCH.

▼ For uncompensated Baro-VNAV systems, LNAV/VNAV NA below -9°C or above 47°C. Simultaneous approach authorized. Use of FD or AP providing RNAV track guidance required during simultaneous operations. For inop ALS, increase RNP 0.10 all Cats visibility to RVR 6000 and RNP 0.30 all Cats visibility to 1%.

MALSR

MISSED APPROACH:
Climb to 3000 on track 054° to MAPPI and on track 004° to ESTMA and hold.

D-ATIS	RALEIGH APP CON	(EAST) RALEIGH TOWER (WEST)	(EAST) GND CON	(WEST)	CLNC DEL	CPDLC
123.8	127.675 307.9	127.45 257.8 Rwys 5R-23L and 14-32	121.9 348.6 Rwys 5R-23L and 14-32	121.7 348.6 Rwy 5L-23R	120.1	



VGSI and RNAV glidepath not coincident (VGSI Angle 3.00/TCH 72).

3000
tr 054°

MAPPI

tr 004°

ESTMA

See planview for multiple IF locations.

GP 3.00°
TCH 57

1900

054°

RW05L

4.6 NM

CATEGORY	A	B	C	D
RNP 0.10 DA		727/30	343 (300-%)	
RNP 0.30 DA		821/50	437 (400-1)	

AUTHORIZATION REQUIRED

ELEV 435

D

TDZE 384

054° to RW05L

10000 X 150

TWR 659

3570 X 100

7500 X 150

REIL Rwy 32

MIRL Rwy 14-32

HIRL Rwys 5R-23L and 5L-23R

TDZ/CL Rwys 5L, 23L, and 23R