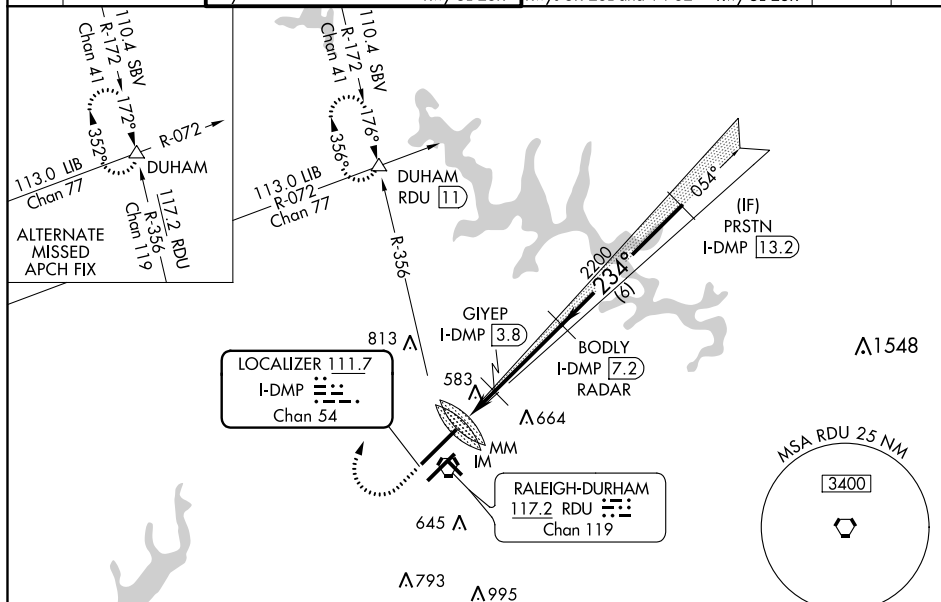


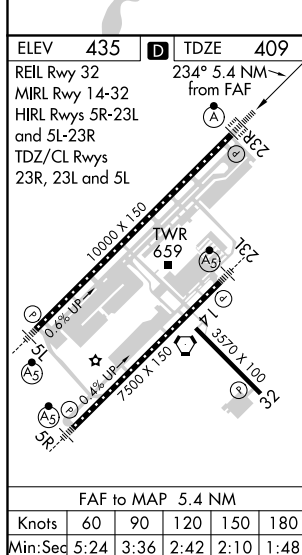
ILS or LOC RWY 23R
RALEIGH-DURHAM INTL (RDU)

MISSED APPROACH: Climb to 1000 then climbing right turn to 2200 on heading 030° and on RDU VORTAC R-356 to DUHAM INT/RDU 11 DME and hold.

D-ATIS	RALEIGH APP CON	(EAST) RALEIGH TOWER (WEST)	(EAST) GND CON (WEST)	CLNC DEL	CPDLC
123.8	127.675 307.9	127.45 257.8 Rwys 5R-23L and 14-32	119.3 257.8 Rwy 5L-23R	121.9 348.6 121.7 348.6 Rwys 5R-23L and 14-32 Rwy 5L-23R	120.1



SE-2, 03 DEC 2020 to 31 DEC 2020



35°53'N-78°47'W

RALEIGH-DURHAM INTL (RDU)
ILS or LOC RWY 23R

Figure 1-1: Example of a 23R approach chart.

The diagram illustrates a 23R approach with the following details:

- Obstacles:** 2200 MSL (obstacle symbol), 3000 MSL (obstacle symbol).
- Approach Type:** S-ILS 23R, S-LOC 23R.
- Heading:** 234°.
- Altitude:** 2200 MSL.
- Distance:** 3.4 NM, 6 NM.
- Chart Elements:**
 - LOC only.**
 - 1000** (altitude)
 - 1200** (altitude)
 - hdg 030°**
 - RDU R-356**
 - DUHAM**
 - VGSJ and ILS glidepath not coincident (VGSJ Angle 3.00/TCH 69).**
 - BODLY**
 - I-DMP 7.2**
 - RADAR**
 - PRSTN I-DMP 13.2**
 - GS 3.00° TCH 56**
 - IM**
 - MM**
 - I-DMP 1.8**
 - I-DMP 3.1**
 - I-DMP 3.8**
 - *1160**
 - 0.1 0.3 0.9 0.7**
 - 3.4 NM**
 - 6 NM**

CATEGORY	A	B	C	D
S-ILS 23R	609/18 200 (200-½)			
S-LOC 23R	1160/24 751 (800-½)	1160/40 751 (800-¾)	1160-1¾ 751 (800-1¾)	1160-2 751 (800-2)
C CIRCLING	1160-1 725 (800-1)	1160-1¼ 725 (800-1¼)	1160-2¼ 725 (800-2¼)	1160-2½ 725 (800-2½)

GIYEP FIX MINIMUMS

S-LOC 23R	900/24	491 (500-½)	900/40 491 (500-¾)	900/50 491 (500-1)
C CIRCLING	960-1	525 (600-1)	1040-1¾ 605 (700-1¾)	1180-2½ 745 (800-2½)