

ILS or LOC RWY 23L  
RALEIGH-DURHAM INTL (RDU)

**MISSED APPROACH:** Climb to 1100 then climbing left turn to 2600 on heading 050° and RDU VORTAC R-092 to ZEBUL INT and hold.

110.4 SBY  
Chan 41

ALTERNATE  
MISSED APCH FIX

ZEBUL  
TYI [33.3]

R-092  
117.2 RDU  
Chan 119

089°

269°

R-269

117.8 TYI  
Chan 125

MSA RDU 25 NM

3400

(IF)  
DOCAT  
I-LEI [13.5]  
RADAR

054°

1800

234°

7.9

APUCU  
I-LEI [5.5]  
RADAR

813

LEPEC  
I-LEI [3.7]

583

587±

664

RDU  
R-092

BEGVE  
I-LEI [2.4]

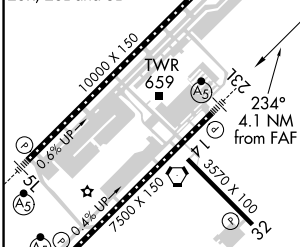
645

RALEIGH-DURHAM  
117.2 RDU  
Chan 119

LOCALIZER 108.5  
I-LEI  
Chan 22

110 MISSED APCH FIX

REIL Rwy 32  
MIRL Rwy 14-32  
HIRL Rwy 5R-23L  
and 5L-23R  
TDZ/CL Rwy  
23R, 23L and 5L



|                   |  |              |  |                               |  |                               |
|-------------------|--|--------------|--|-------------------------------|--|-------------------------------|
| <b>A</b> 2048     |  |              |  | 117.2 RDU<br>Chan 119         |  | RDU [19.6]                    |
| 1100<br>          | 2600<br>                                       | RDU<br>R-092 | ZEBUL<br>  | APUCU<br>I-LEI [5.5]<br>RADAR | Localizer unusable<br>from 1 NM from<br>threshold. | DOCAT<br>I-LEI [3.5]<br>RADAR |
| *LOC only.        |  |              |  |                               |  |                               |
|                   |  |              |  |                               |  |                               |
| CATEGORY          | A  |              | B  | C                             | D  |                               |
| S-ILS 23L         |  |              | 806/35   | 371 (400- $\frac{5}{8}$ )     |  |                               |
| S-LOC 23L         |  |              | 840/40   | 405 (500- $\frac{3}{4}$ )     |  |                               |
| <b>C</b> CIRCLING | 960-1 $\frac{1}{4}$ 525 (600-1 $\frac{1}{4}$ ) |              | 1040-1 $\frac{3}{4}$<br>605 (700-1 $\frac{3}{4}$ ) |                               | 1180-2 $\frac{1}{2}$<br>745 (800-2 $\frac{1}{2}$ ) |                               |

SE-2, 03 DEC 2020 to 31 DEC 2020