
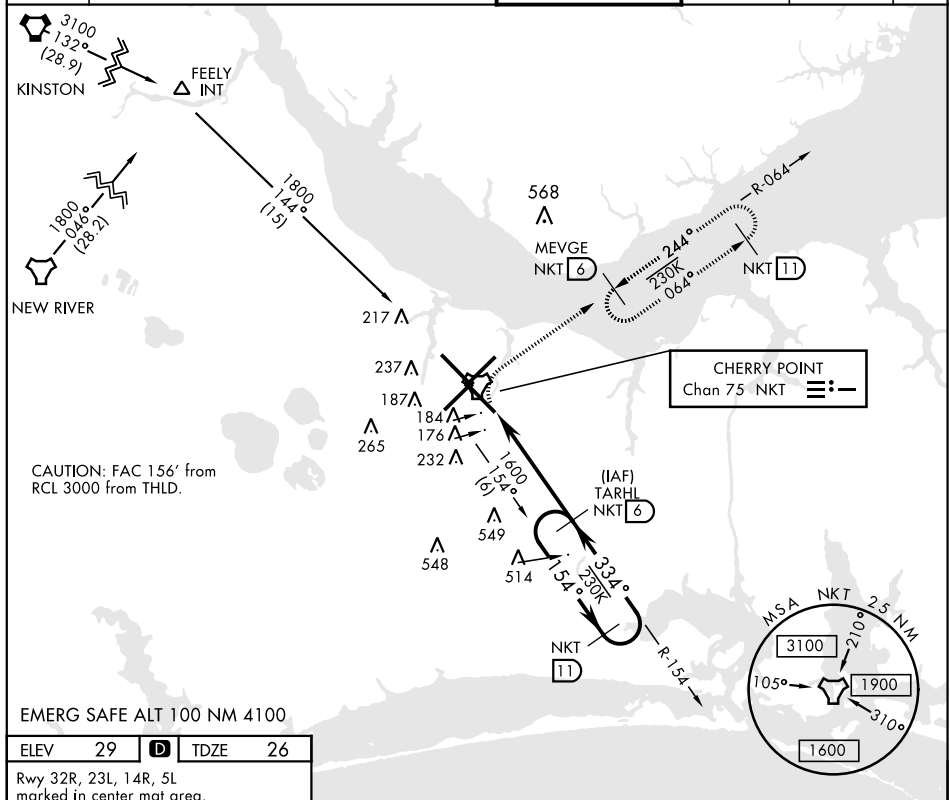


TACAN RWY 32L

TACAN NKT Chan 75		APCH CRS 334°		Rwy Idg 7551 TDZE 26 Arpt Elev 29		AL-471 [USN]		CHERRY POINT MCAS (CUNNINGHAM FLD) (KNKT)							
* When ALS inop, increase vis CAT AB to 1 mile, CAT CD to 1 1/2 miles.						ALSF-1 		MISSED APPROACH: Climb on hdg 334°. At 500 climbing right turn to 1600 direct MEVGE and hold.							
ATIS		CHERRY POINT APP CON						GND CON		CLNC DEL		ASR/ PAR			
127.475		(E) 119.75		360.775		(abv 2600')		CHERRY POINT TOWER 121.3 340.2		128.625		125.95		ASR/ PAR	
(E) 132.575		299.6		(at/blw 2600')											
244.875		(W) 119.35		377.175		(N) 124.1 268.7				239.025		316.125			



500 1600 MEVGE NKT 6

hdg 334°

TACAN

OSHEN 1.2 2.4

TARHL 6

154° 1600 334° 1600

2.95° TCH 50

CATEGORY	A	B	C	D
S-32L *	480-1/2 454 (500-1/2)	480-7/8 454 (500-7/8)	600-1 571 (600-1 1/2)	600-2 571 (600-2)
CIRCLING	580-1 551 (600-1)			

HIRL all Rwy  
REIL Rwy 5L and 14R  
Rwy 5L-23R 7552', 14R-32L ldg 7551'

CHERRY POINT, NORTH CAROLINA

34° 54' N-76° 53' W

CHERRY POINT MCAS (CUNNINGHAM FLD) (KNKT)

Amdt 5 10SEP20

## TACAN RWY 32L

SE-2, 03 DEC 2020 to 31 DEC 2020

SE-2, 03 DEC 2020 to 31 DEC 2020