

RNAV (GPS) RWY 5R

WAAS	APCH CRS	Rwy Idg	8188
Chan <b>71199</b>	<b>054°</b>	TDZE	<b>27</b>
<b>W05A</b>		Arpt Elev	<b>29</b>

AL-471 [USN]

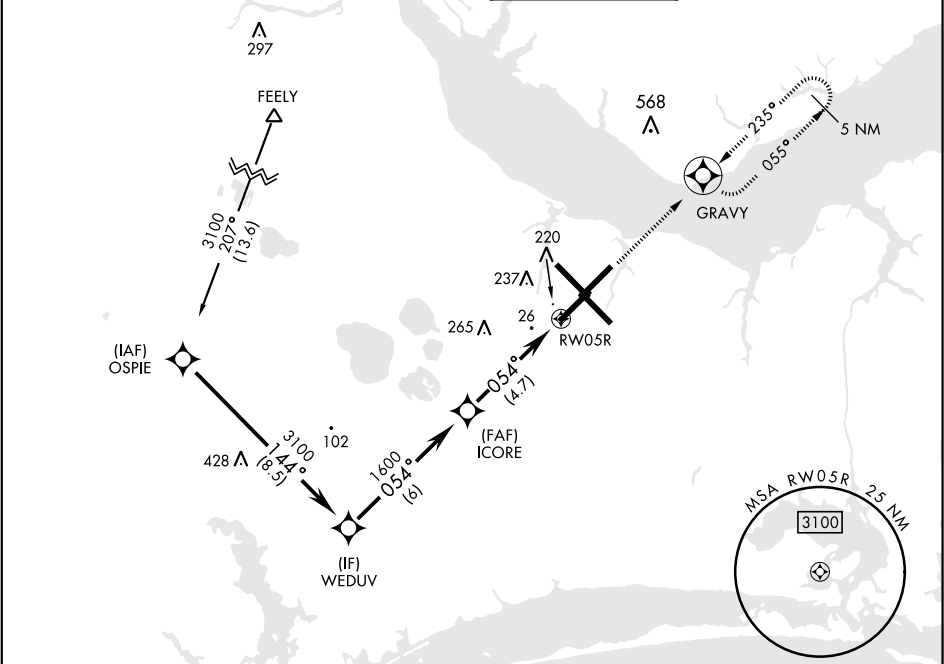
CHERRY POINT MCAS (CUNNINGHAM FLD) (KNKT)

RNP APCH

For uncompensated Baro-VNAV systems, LNAV/VNAV NA below -15°C (5°F) or above 54°C (129°F).

MISSED APPROACH: Climb to 3100 direct GRAVY and hold. Continue climb in hold to 3100.

ATIS	CHERRY POINT APP CON				CHERRY POINT TOWER	GND CON	CLNC DEL	ASR/ PAR
<b>127.475</b>	(E) <b>119.75</b>	<b>360.775</b>	(abv 2600')		<b>121.3 340.2</b>	<b>128.625</b>	<b>125.95</b>	
<b>244.875</b>	(E) <b>132.575</b>	<b>299.6</b>	(at/blw 2600')			<b>239.025</b>	<b>316.125</b>	
	(W) <b>119.35</b>	<b>377.175</b>	(N) <b>124.1</b>	<b>268.7</b>				



EMERG SAFE ALT 100 NM 4100

VGSI and RNAV glidepath not coincident.				ELEV 29	TDZE 27
				Rwy 32R, 23L, 14R, 5L marked in center mat area.	
CATEGORY				A5	
LPV DA				227-3/4 200 (200-3/4)	
LNAV/VNAV DA				398-1 371 (400-1)	
LNAV MDA				500-1 473 (500-1) 500-1 473 (500-1)	
CIRCLING				580-1 551 (600-1) 600-1 571 (600-1 1/2) 600-2 571 (600-2)	

RNAV (GPS) RWY 5R

SE-2, 03 DEC 2020 to 31 DEC 2020

SE-2, 03 DEC 2020 to 31 DEC 2020