

## RNAV (GPS) RWY 32L

WAAS Chan <b>54304</b> <b>W32A</b>	APCH CRS <b>325°</b>	Rwy Idg <b>7551</b> TDZE <b>26</b> Arpt Elev <b>29</b>
--	-------------------------	--

AL-471 [USN] CHERRY POINT MCAS (CUNNINGHAM FLD) (KNKT)

RNP APCH

**T** \*When ALS inop, increase vis to  $\frac{3}{4}$  mile.  
 \*\*When ALS inop, increase vis to  $\frac{1}{8}$  mile.  
 \*\*\*When ALS inop, increase CAT AB vis to 1 mile,  
 CAT CD vis to  $1\frac{3}{8}$  miles.

ALSF-1

**MISSED APPROACH:** Climb to 3100 direct HULAN and hold.

ATIS
127.475
244.875

CHERRY POINT APP CON

(E)	119.75	360.775	(abv 2600')
(E)	132.575	299.6	(at/blw 2600')
(W)	119.35	377.175	(N) 124.1 268.7

## CHERRY POINT TOWER

GND CON

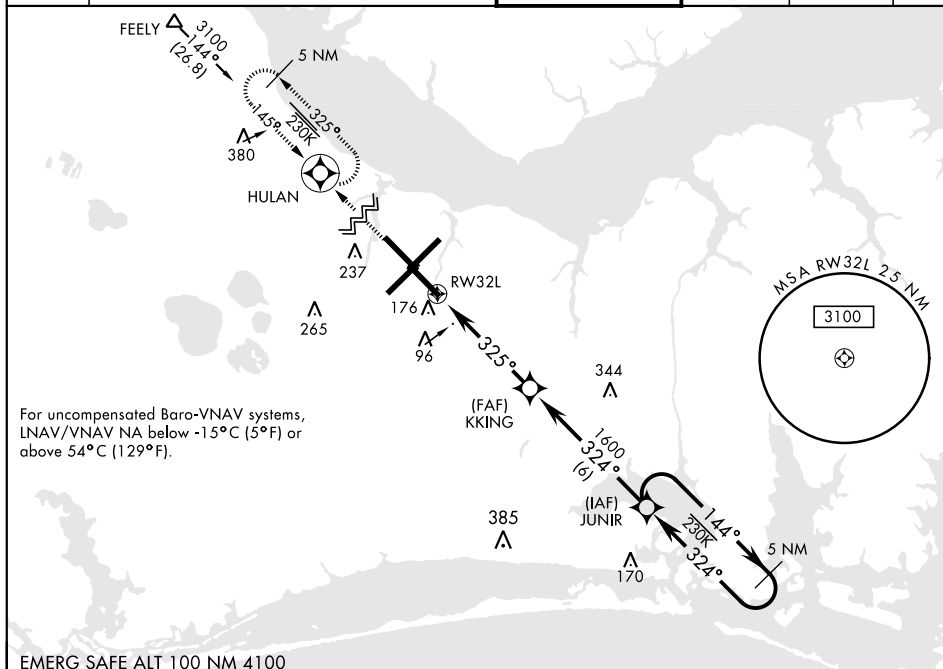
CLNC DEL

ASR/  
PAR

239.025

316 125

121.3    340.2



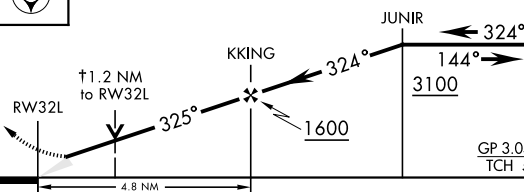
EMERG SAFE ALT 100 NM 4100

3100

HILAN

VGS| and RNAV glidepath no coincident.

† LNAV only



GP 3.04 9  
TCH 50

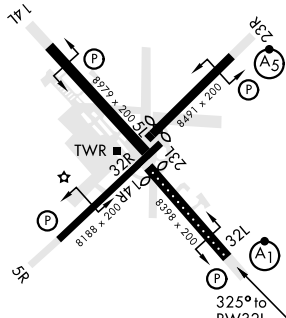
ELEV 29

**D**

TC

26

Rwy 32R, 23L, 14R, 5L  
marked in center mat area.



HIRL all Rwy  
REIL Rwy 5L and 14R  
Rwy 5L-23R 7552', 14R-32L Idg 7551'

CHERRY POINT, NORTH CAROLINA

34°54'N-76°53'W

CHERRY POINT MCAS (CUNNINGHAM FLD) (KNKT)

Amdt 7 10SEP20

## RNAV (GPS) RWY 32L