

LOC I-INT	APP CRS	Rwy Idg	6655
110.3	332°	TDZE	941
		Apt Elev	969

ILS or LOC RWY 33

SMITH REYNOLDS (INT)

▼

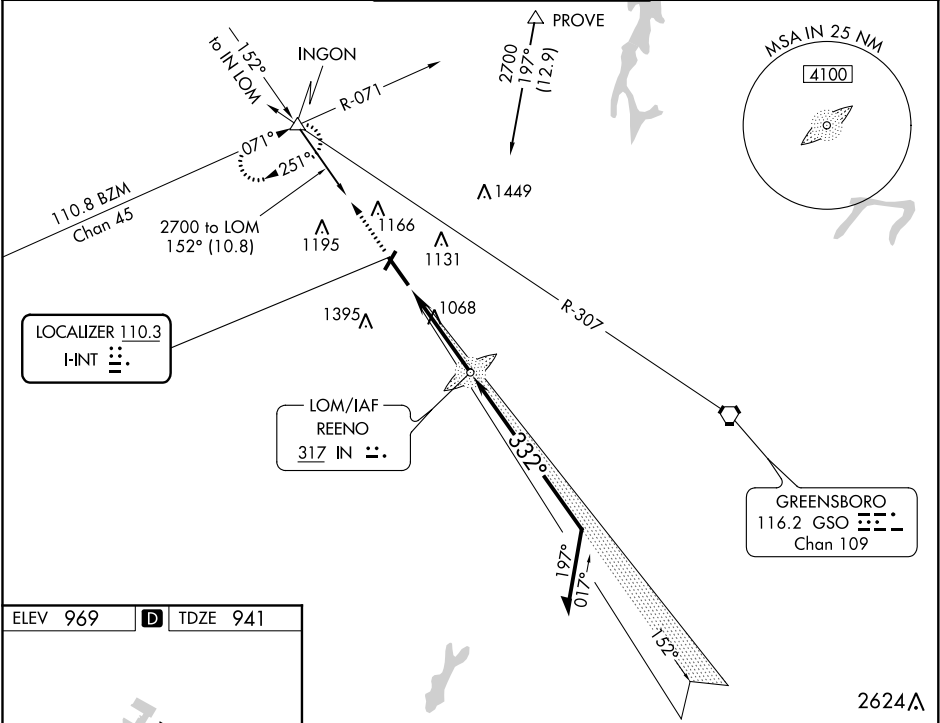
▲

For inoperative MALSR, when using Piedmont Triad Intl altimeter setting, increase S-ILS 33 visibility to RVR 5000 all Cats. When local altimeter setting not received, use Piedmont Triad Intl altimeter setting and increase all DA 39 feet and all MDA 40 feet; increase S-LOC 33 Cat C visibility to RVR 4000 and Circling Cat D ¼ mile. ADF Required. Circling Rwy 4, 22 NA at night.

MALSR

MISSED APPROACH: Climb to 3500 via 332° bearing from REENO LOM to INGON INT and hold, continue climb-in-hold to 3500.

ATIS	GREENSBORO APP CON	WINSTON-SALEM TOWER ★	GND CON	UNICOM
121.3	124.35 269.225	123.75 (CTAF) 0 257.8	128.25	122.95



ELEV 969 D TDZE 941

MIRL Rwy 4-22  
REIL Rwy 15-33  
HIRL Rwy 15-33

FAF to MAP 3.9 NM

Knots	60	90	120	150	180
Min:Sec	3:54	2:36	1:57	1:34	1:18

<div>3500 ↑ IN 332°</div>		<div>INGON △</div>		<div>IN LOM 2212</div>		<div>152°</div>		<div>Remain within 10 NM</div>	
				<div>2600</div>		<div>332°</div>		<div>2500</div>	
<div>GS 3.00° TCH 57</div>									
<div>3.9 NM</div>									
CATEGORY	A		B		C		D		
S-ILS 33	1141/24 200 (200-½)								
S-LOC 33	1320/24 379 (400-½)								NA
CIRCLING	1480-1 511 (600-1)		1580-1 611 (700-1)		1580-1¾ 611 (700-1¾)		NA		