

WAAS CH 45899 W24A	APP CRS 238°	Rwy Idg TDZE 26 Apt Elev 32	8016
--	------------------------	---	-------------

RNAV (GPS) RWY 24

WILMINGTON INTL (ILM)

⚠

ASR

For uncompensated Baro-VNAV systems, LNAV/VNAV NA below -7°C (20°F) or above 54°C (130°F).
DME/DME RNP-0.3 NA.
** RVR 1800 authorized with use of FD or AP or HUD to DA.

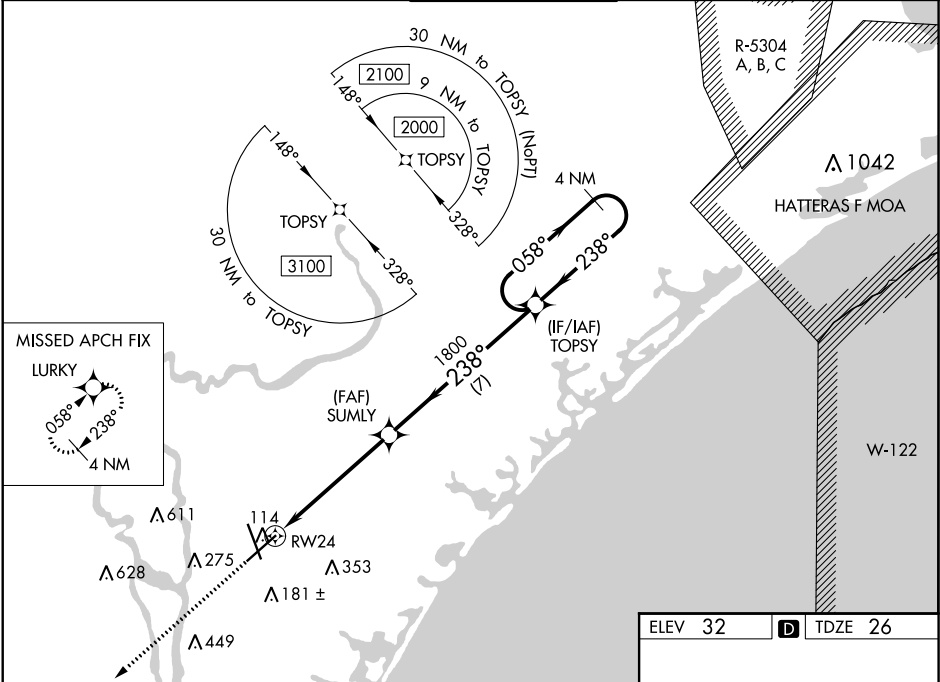
MALSR

⬮

AS

MISSED APPROACH: Climb to 3100 direct LURKY and hold.

ATIS 124.975	WILMINGTON APP CON ★ 118.25 284.65 (164°-343°) 135.75 317.425 (344°-163°)	WILMINGTON TOWER ★ 119.9 (CTAF) 239.3	GND CON 121.9 348.6	UNICOM 122.95
------------------------	---	--	-------------------------------	-------------------------



3100

LURKY

VGSI and RNAV glidepath not coincident (VGSI Angle 3.00/TCH 48).

4 NM

Holding Pattern

*LNAV only.

SUMLY

1800

238°

058°

2000

GP 3.00°

TCH 52

1.4 NM

4 NM

7 NM

RW24

CATEGORY	A	B	C	D
LPV DA **	226/24 200 (200-½)			
LNAV/VNAV DA	401/40 375 (400-¾)			
LNAV MDA	500/24 474 (500-½)	500/50 474 (500-1)		
CIRCLING	560-1 528 (600-1)	720-2 688 (700-2)	920-3 888 (900-3)	

