

HI-TACAN Z RWY 22R

TACAN	SSC	APCH CRS	Rwy Idg	10,014	8014		
Chan	38	222°	TDZE	240	235	JAL-409 [USAF]	SHAW AFB (KSSC)
			Arpt Elev	241	241		

T * When ALS inop, increase vis to 1½ miles.
** When ALS inop, increase vis to 1¾ miles.

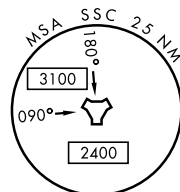
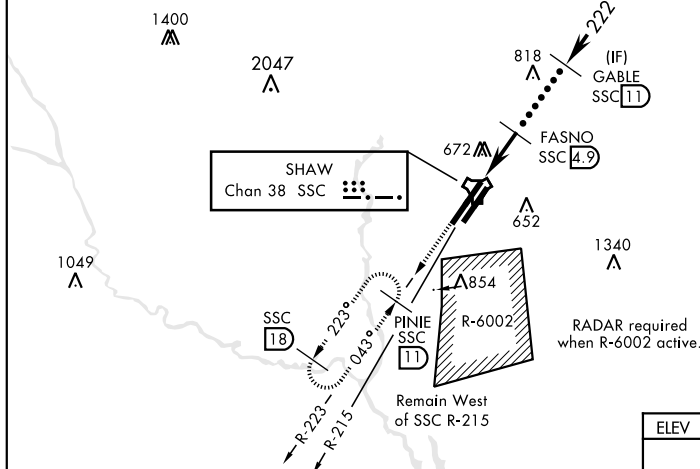
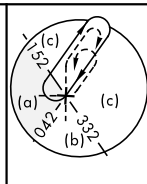
ALSF-1

MISSED APPROACH: Climbing to 2000, intercept SSC TACAN R-223 to PINIE and hold.

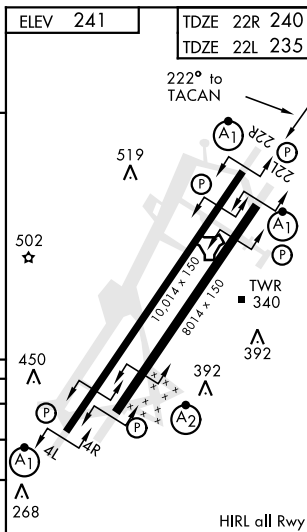
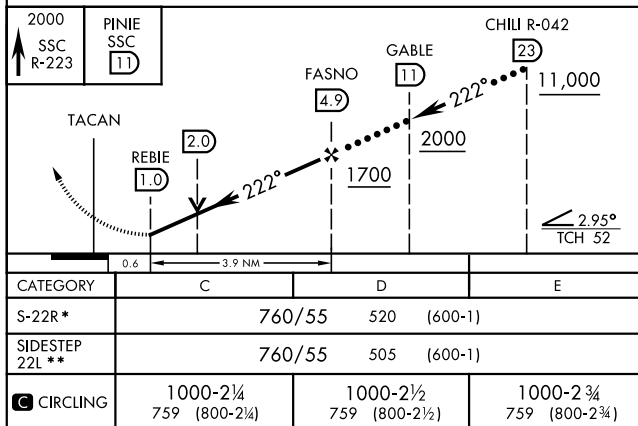
ATIS ★ 132.125 270.1	SHAW APP CON 125.4 318.1	SHAW TOWER ★ 126.65 254.25	GND CON 126.1 275.8	CLNC DEL 126.1 275.8
-------------------------	-----------------------------	-------------------------------	------------------------	-------------------------

USAF Only: When Rwy 4L VGSI inop, circling to Rwy 4L at night requires approval from MAJCOM director of Ops or equivalent.
Terrain 242' MSL, 200' prior to threshold.

USAF Only: When VGSI inop, sidestep to Rwy 22L, circling to Rwy 22L at night requires approval from MAJCOM Director of Ops or equivalent. Terrain 239' MSL, 200' prior to threshold, 200' right of course.



EMERG SAFE ALT 100 NM 3800



HI-TACAN Z RWY 22R