

LOC I-GMU 109.7	APP CRS 006°	Rwy Idg 5393 TDZE 1015 Apt Elev 1048
---------------------------	------------------------	---

ILS Z or LOC Z RWY 1

GREENVILLE DOWNTOWN (GMU)

ADF required.			MALSF	
When local altimeter setting not received, use Greer altimeter setting and increase DA to 1245, increase all MDAs 40 feet and visibility S-LOC 1 Cat C and D ½ SM and Circling Cat C visibility ¼ SM. Inop table does not apply to S-LS 1.			MISSED APPROACH: Climb to 1500 then climbing right turn to 2900 direct JUDKY LOM and hold, continue climb-in-hold to 2900.	
ATIS ★ 127.075	GREER APP CON★ 118.8 270.275	GREENVILLE TOWER★ 119.9 (CTAF) 0 257.7	GND CON 121.25	UNICOM 122.95

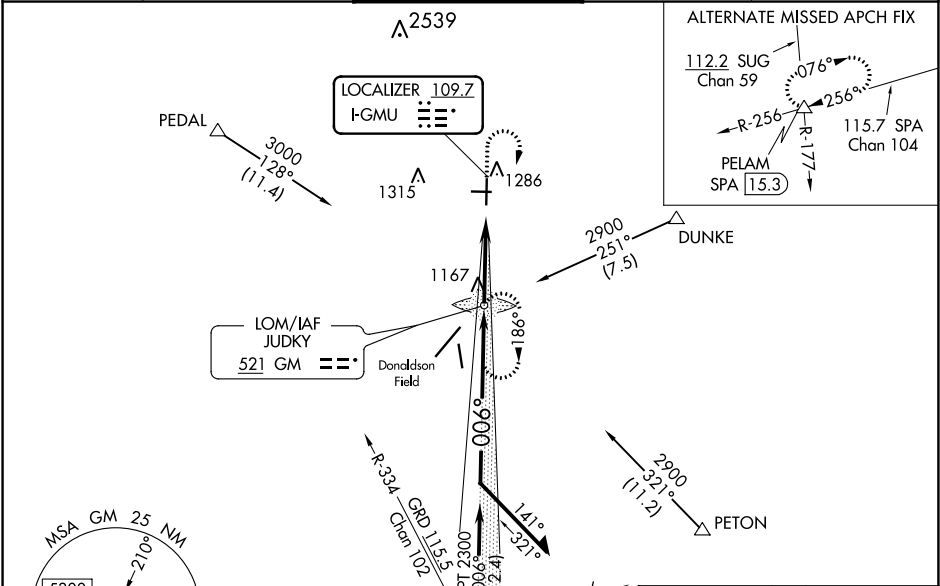


Diagram illustrating the approach procedure for JUDKY. The diagram shows a 30° heading, a 3000 ft altitude, and a 186° turn. The diagram includes a "Remain within 10 NM" instruction, a "GS 3.00° TCH 35" instruction, and a "GS unusable below 1216" instruction. A "3.6 NM" distance is marked. A "JUDKY" box shows a 1500 ft altitude, a 2900 ft altitude, and a "LOC only" instruction. A "SPRKY INT/ RADAR (RADAR REQD)" instruction is also present.

Diagram illustrating the approach procedure for JUDKY. The diagram shows a 30° heading, a 3000 ft altitude, and a 186° turn. The diagram includes a "Remain within 10 NM" instruction, a "GS 3.00° TCH 35" instruction, and a "GS unusable below 1216" instruction. A "3.6 NM" distance is marked. A "JUDKY" box shows a 1500 ft altitude, a 2900 ft altitude, and a "LOC only" instruction. A "SPRKY INT/ RADAR (RADAR REQD)" instruction is also present.

CATEGORY	A	B	C	D
S-ILS 1	1216-¾ 201 (200-¾)			
S-LOC 1	1540-¾	525 (500-¾)	1540-1¼	525 (500-1¼)
CIRCLING	1620-1	572 (600-1)	1780-2 732 (800-2)	1860-2¾ 812 (900-2¾)

FAF to MAP 3.6 NM					
Knots	60	90	120	150	180
Min:Sec	3:36	2:24	1:48	1:26	1:12