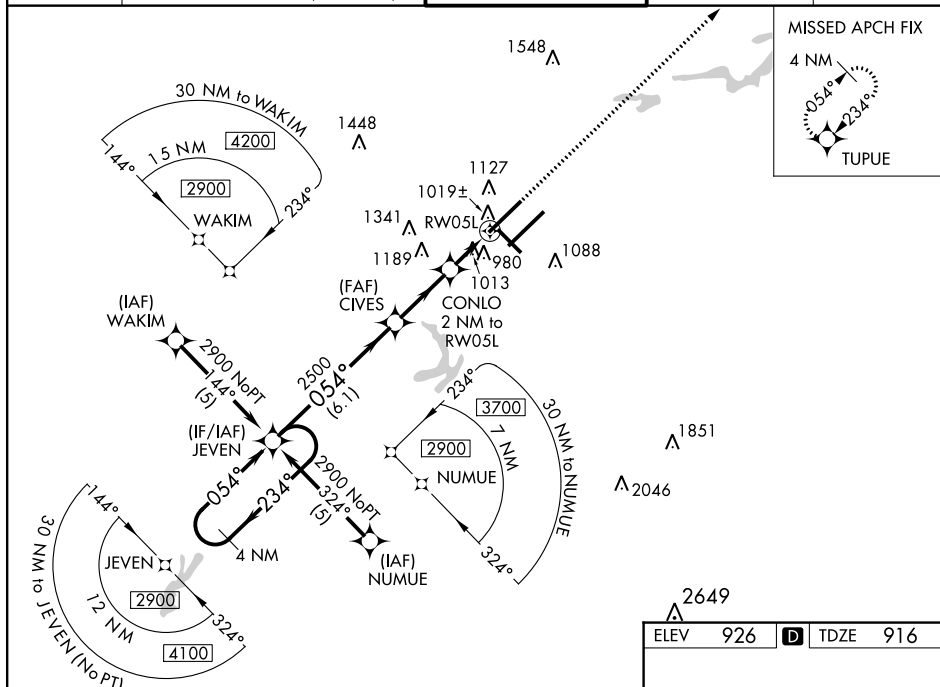


RNAV (GPS) RWY 5L  
PIEDMONT TRIAD INTL (GSO)

**MISSED APPROACH:** Climb to 2800 direct TUPUE and hold.

CLNC DEL  
**121.75**

4 NM Holding Pattern

VGS1 and RNAV glidepath not coincident (VGS1 Angle 3.00/TCH 78).

2800 TUPUE

\*LNAV only.

2900 ← 234° 054° → JEVEN

054°

2500 CIVES

CONLO 2 NM to RW05L

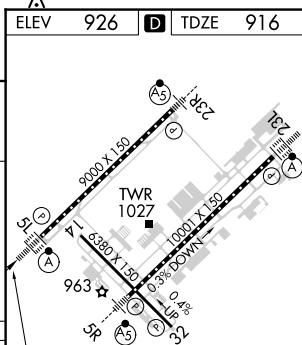
\*1600

\*1 NM to RW05L

RW05L

GP 3.00° TCH 55

CATEGORY	A	B	C	D
LPV DA	1116/18 200 (200-½)			
LNAV/ VNAV DA	1367/50 451 (500-1)			
LNAV MDA	1300/24 384 (400-½)			1300/50 384 (400-1)
<b>C</b> CIRCLING	1440-1 514 (600-1)	1700-2¼ 774 (800-2¼)	1700-2½ 774 (800-2½)	



TDZ/CL Rwy 5L, 23R and 23L  
REIL Rwy 32  
HIRL Rwy 14-32, 5R-23L and

SE-2, 03 DEC 2020 to 31 DEC 2020