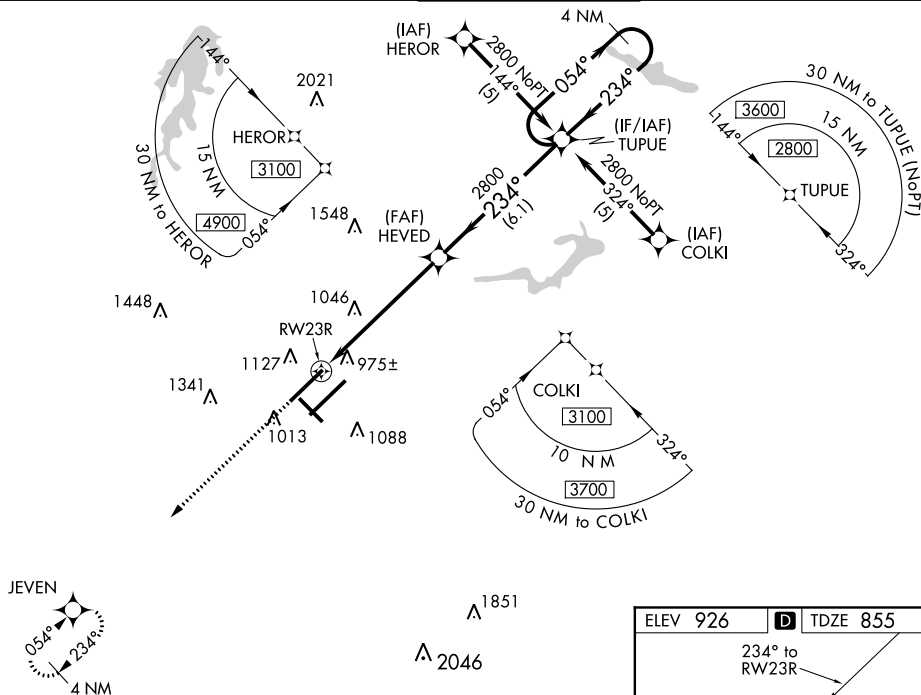


RNAV (GPS) RWY 23R
PIEDMONT TRIAD INTL (GSO)

MISSED APPROACH: Climb to 2500 direct JEVN and hold.

CLNC DEL
121.75

2500 JEVEN VGSI and RNAV glidepath not coincident (VGSI Angle 3.00°/TCH 69).

*LNAV only. *1.4 NM to RW23R

HEVED 2800 TUPUE

4 NM Holding Pattern

RW23R

234° 054° 2800

GP 3.00° TCH 55

3.4 NM 4.1 NM

ELEV 926 [D] TDZE 855

234° to RW23R

6000 X 150

TWR 1027

6380 X 150

10001 X 150

0.3% DOWN

0.4% UP

5L 23R 23L

963 57 32

V T SRA

TDZ/CL Runways 5L, 23R and 23L
 REIL Rwy 32
 HIRL Rws 14-32, 5R-23L and 5L-23R

SE-2, 03 DEC 2020 to 31 DEC 2020