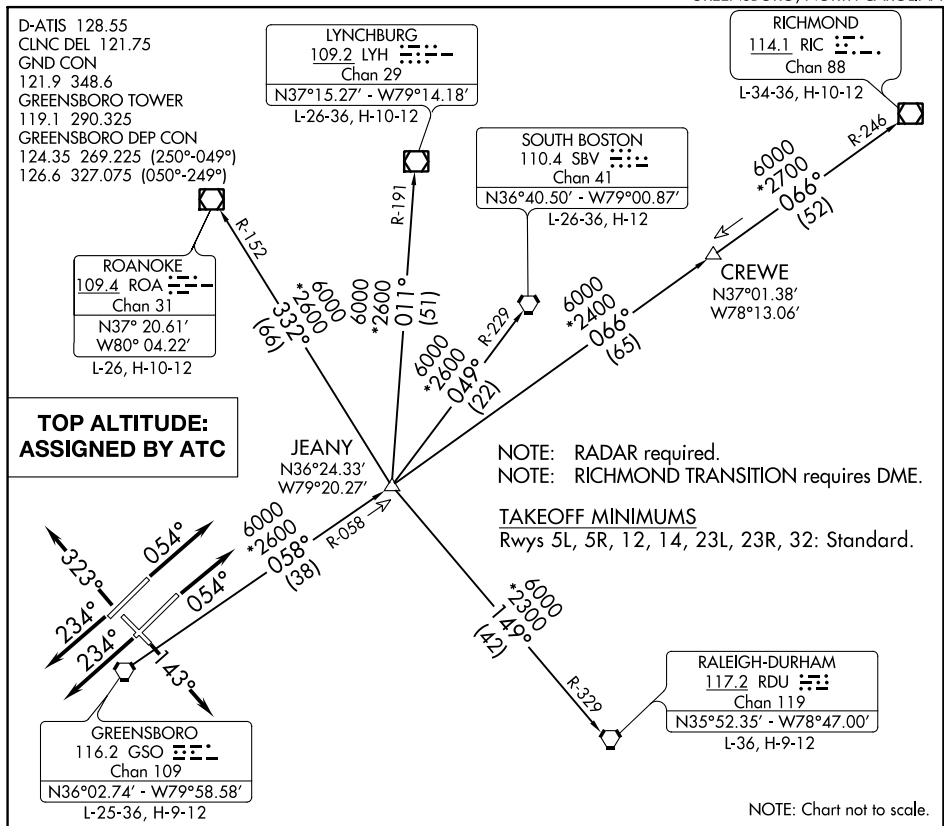


QUAKER SEVEN DEPARTURE

GREENSBORO, NORTH CAROLINA



DEPARTURE ROUTE DESCRIPTION

TAKEOFF RUNWAYS 5L/R: Climb heading 054°, thence. . .

TAKEOFF RUNWAY 14: Climb heading 143°, thence. . .

TAKEOFF RUNWAYS 23L/R: Climb heading 234°, thence. . .

TAKEOFF RUNWAY 32: Climb heading 323°, thence. . .

... maintain altitude assigned by ATC. RADAR vectors will be provided to intercept assigned radial associated with the issued transition, or if no transition assigned, RADAR vectors will be provided to the appropriate fix. Expect requested altitude/flight level 10 minutes after departure.

LYNCHBURG TRANSITION (QUAK7.LYH): From over GSO VORTAC on GSO R-058 to JEANY INT then on LYH R-191 to LYH VOR/DME.

RALEIGH/DURHAM TRANSITION (QUAK7.RDU): From over GSO VORTAC on GSO R-058 to JEANY INT then on RDU R-329 to RDU VORTAC.

RICHMOND TRANSITION (QUAK7.RIC): From over GSO VORTAC on GSO R-058 to JEANY INT then on GSO R-058 and RIC R-246 to RIC VOR/DME.

ROANOKE TRANSITION (QUAK7.ROA): From over GSO VORTAC on GSO R-058 to JEANY INT then on ROA R-152 to ROA VOR/DME.

SOUTH BOSTON TRANSITION (QUAK7.SBV): From over GSO VORTAC on GSO R-058 to JEANY INT then on SBV R-229 to SBV VORTAC.

QUAKER SEVEN DEPARTURE

(QUAK7.GSO) 03JAN19

GREENSBORO, NORTH CAROLINA
PIEDMONT TRIAD INTL (GSO)