

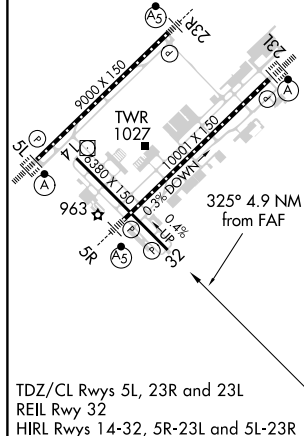
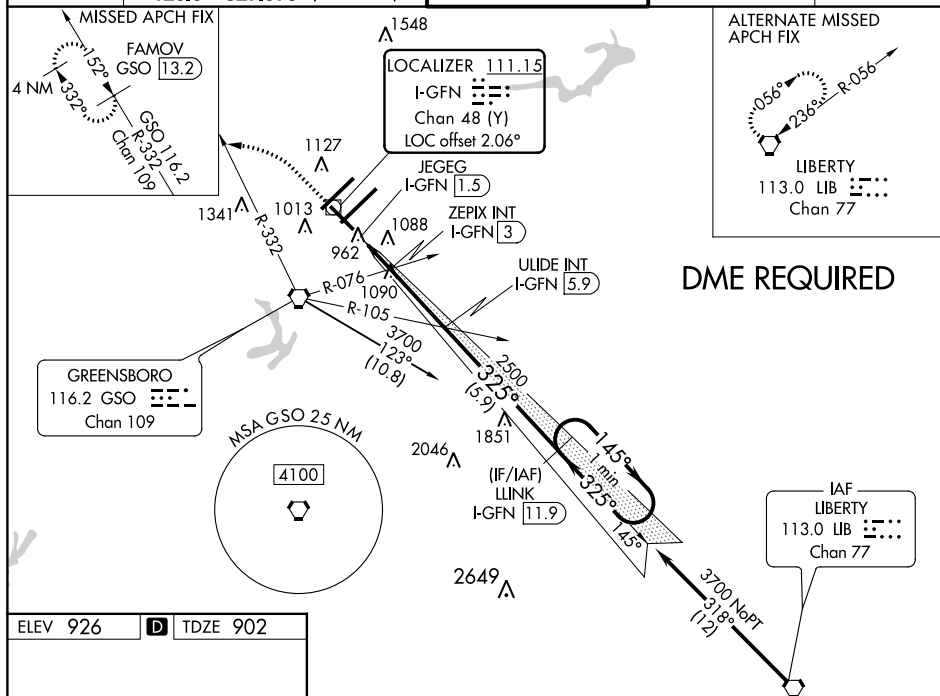
LOC/DME I-GFN <u>111.15</u> Chan 48 (Y)	APP CRS 325°	Rwy Idg 6380 TDZE 902 Apt Elev 926
---	------------------------	---

ILS Z or LOC/DME Z RWY 32
PIEDMONT TRIAD INTL (GSO)

T DME required. When local altimeter setting is not received use Smith
A Reynolds altimeter setting and increase DA to 1188 feet, all MDA 40
feet, increase S-ILS 32 all Cats visibility $\frac{1}{8}$ mile and S-LOC 32 Cats
C/D $\frac{1}{8}$ mile, and Circling Cats C/D $\frac{1}{4}$ mile.

MISSED APPROACH: Climb to 1400 then climbing left turn to 3700 on heading 307° and GSO VORTAC R-332 to FAMOV/GSO 13.2 DME and hold.

D-ATIS 128.55	GREENSBORO APP CON		GREENSBORO TOWER		GND CON	CLNC DEL
	124.35	269.225 (250°-049°)	119.1	290.325	121.9	348.6
	126.6	327.075 (050°-249°)				121.75



*LOC only.				
CATEGORY	A	B	C	D
S-ILS 32	1152-3/4		250 (300-3/4)	
S-LOC 32	1220-1	318 (400-1)	1220-7/8	318 (400-7/8)
C CIRCLING	1440-1	514 (600-1)	1700-2 1/4 774 (800-2 1/4)	1700-2 1/2 774 (800-2 1/2)