

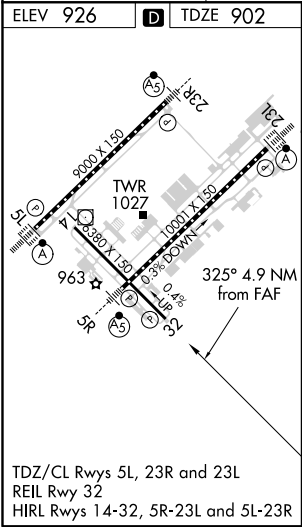
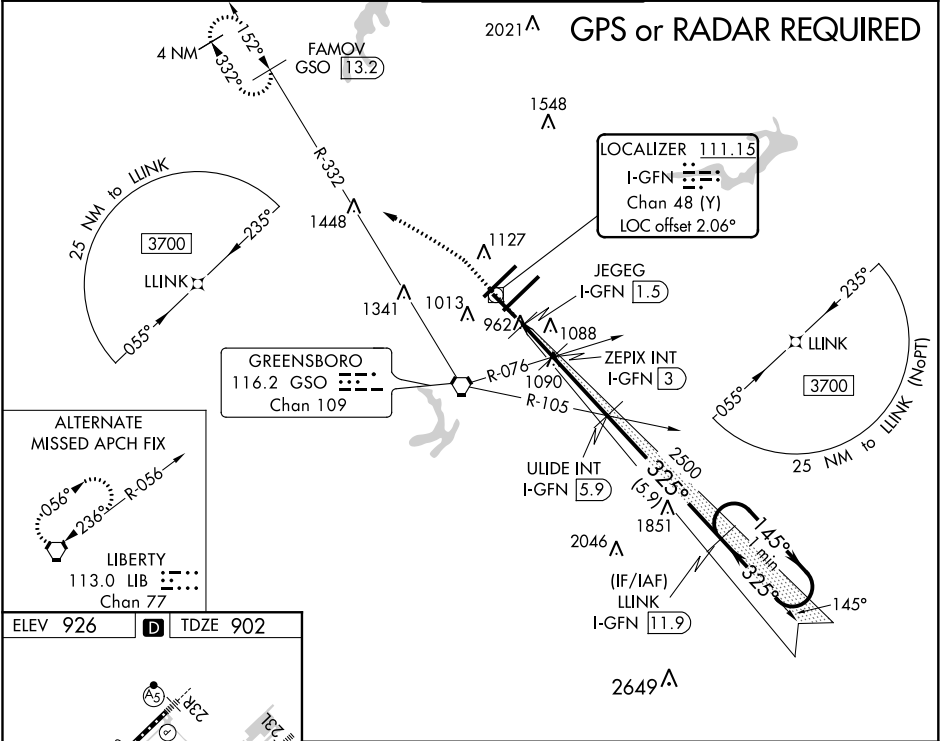
LOC/DME I-GFN 111.15 Chan 48 (Y)	APP CRS 325°	Rwy Idg TDZE 902 Apt Elev 926
---	------------------------	---

ILS Y or LOC/DME Y RWY 32
PIEDMONT TRIAD INTL (GSO)

⚠ DME required. When local altimeter setting is not received use Smith Reynolds altimeter setting and increase DA to 1188 feet, all MDA 40 feet, increase S-ILS 32 all Cats visibility 1/8 mile and S-LOC 32 Cats C/D 1/8 mile, and Circling Cats C/D 1/4 mile.

MISSED APPROACH: Climb to 1400 then climbing left turn to 3700 on heading 307° and GSO VORTAC R-332 to FAMOV/GSO 13.2 DME and hold.

D-ATIS 128.55	GREENSBORO APP CON 124.35 269.225 (250°-049°) 126.6 327.075 (050°-249°)	GREENSBORO TOWER 119.1 290.325	GND CON 121.9 348.6	CLNC DEL 121.75
-------------------------	---	--	-------------------------------	---------------------------



1400 ↑	3700 hdg 307°	GSO R-332	FAMOV GSO 13.2	ULIDE INT I-GFN 5.9	LLINK I-GFN 11.9	One Minute Holding Pattern
*LOC only.						
<p>The diagram shows a flight path starting from a point on the left, indicated by a dashed arrow. The path proceeds through several navigation points: JEJEG I-GFN 1.5, ZEPIX INT I-GFN 3, and ULIDE INT I-GFN 5.9. Distances between these points are marked as 0.4, 1.6 NM, 2.9 NM, and 5.9 NM. A shaded area represents a holding pattern around the ULIDE INT point, with a radius of 1600 feet. The path then turns right at a 325° heading to a 145° heading. The final segment is a 3700-foot holding pattern. The ground speed is 3.00° and the track height is 53.</p>						
CATEGORY	A		B		C	D
S-ILS 32			1152-¾		250 (300-¾)	
S-LOC 32	1220-1		318 (400-1)		1220-⅞ 318 (400-⅞)	
CIRCLING	1440-1		514 (600-1)		1700-2¼ 774 (800-2¼)	
					1700-2½ 774 (800-2½)	

SE-2, 03 DEC 2020 to 31 DEC 2020

SE-2, 03 DEC 2020 to 31 DEC 2020