

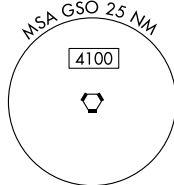
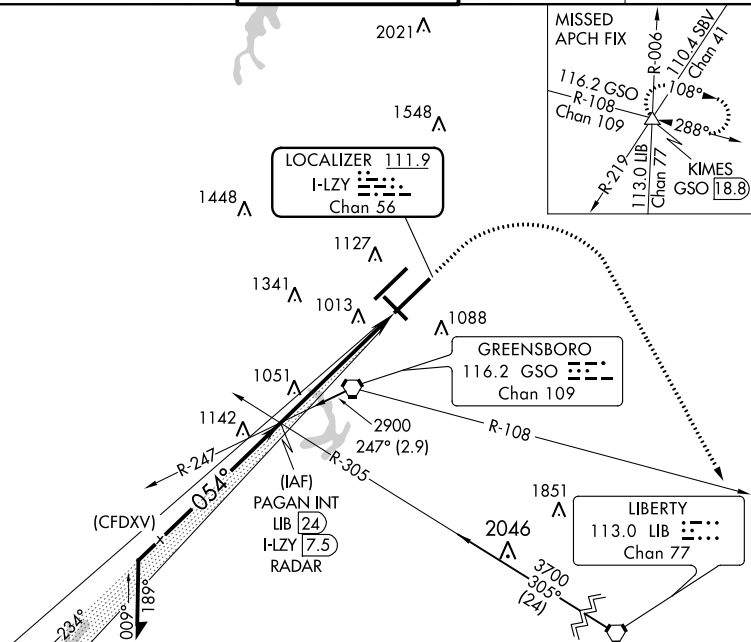
ILS or LOC RWY 5R
PIEDMONT TRIAD INTL (GSO)

MISSED APPROACH: Climb to 1600 then climbing right turn to 3000 on heading 139° and GSO VORTAC R-108 to KIMES INT/GSO 18.8 DME and hold.

ALTERNATE MISSED
APCH FIX

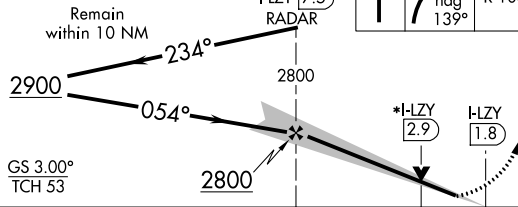
056°
236°—R-056

LIBERTY
LIB : : :
113.0
Chan 77

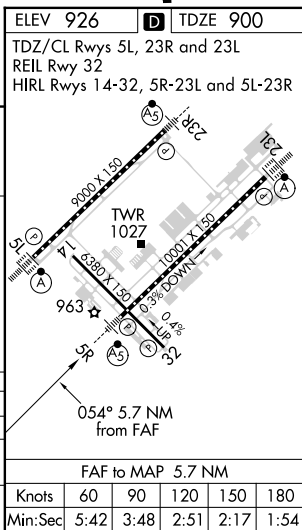


1600 ↑	3000 hdg 139°	GSO R-108	KIMES △
-----------	---------------------	--------------	------------

*LOC only



	A	B	C	D
S-ILS 5R **	1100/24 200 (200-½)			
S-LOC 5R	1320/24	420 (400-½)	1320/40	420 (400-¾)
C CIRCLING	1440-1	514 (600-1)	1700-2¼ 774 (800-2¼)	1700-2½ 774 (800-2½)



SE-2, 03 DEC 2020 to 31 DEC 2020