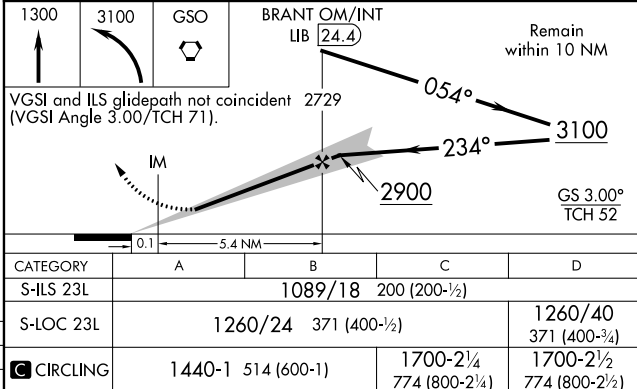
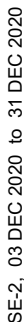


ILS or LOC RWY 23L
PIEDMONT TRIAD INTL (GSO)

MISSED APPROACH: Climb to 1300 then climbing left turn to 3100 direct GSO VORTAC and hold, continue climb-in-hold to 3100.

CLNC DEL
121-75

SE-2, 03 DEC 2020 to 31 DEC 2020