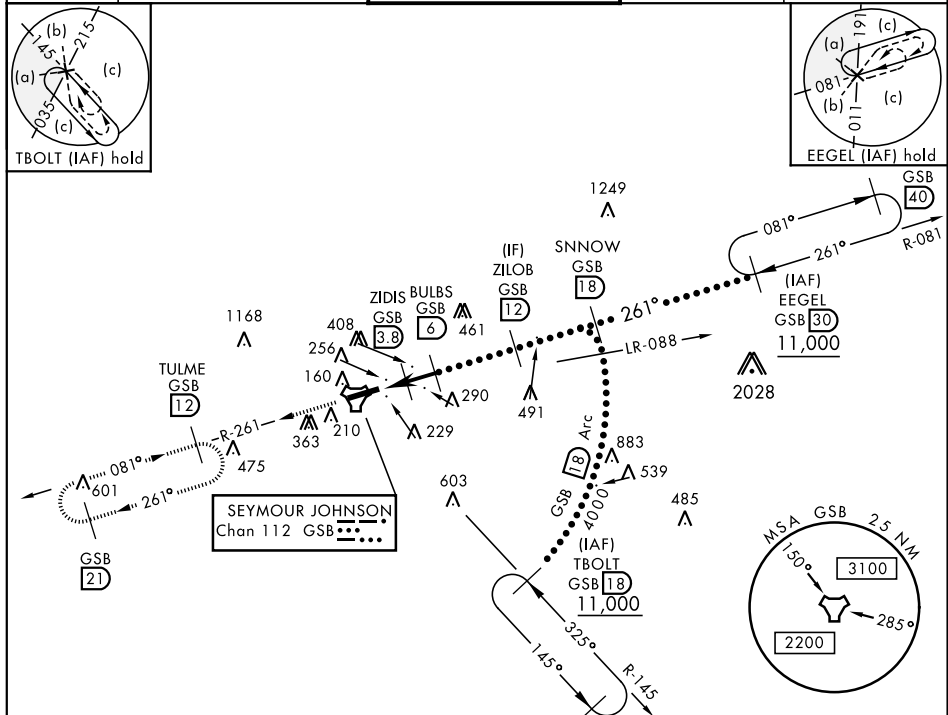


HI-TACAN Z RWY 26

TACAN GSB Chan 112	APCH CRS 261°	Rwy ldg 11,760 TDZE 109 Arprt Elev 109	JAL-169 [USAF]	SEYMOUR JOHNSON AFB (KGSB)
------------------------------	-------------------------	---	----------------	----------------------------

<p>▼ * When ALS inop, increase vis to 1¼ miles. ** Circling N of Rwy 8-26 not authorized.</p>	<p>ALSF-1 (A1)</p>	<p>MISSED APPROACH: Climb to 2200 via GSB R-261 to TULME and hold.</p>
---	------------------------	--

<p>ATIS ★ 317.625</p>	<p>SEYMOUR JOHNSON APP CON 258°-110° 123.7 290.9 111°-257° 119.7 273.6</p>	<p>SEYMOUR JOHNSON TOWER ★ 126.25 370.875</p>	<p>GND CON 138.1 275.8</p>	<p>CLNC DEL 128.025 270.8</p>
----------------------------------	--	--	---------------------------------------	--



EMERG SAFE ALT 100 NM 3700

2200 GSB R-261	TULME R-261 12	†BULBS to COMOZ	SNNOW R-081 18	EEGEL R-081 30
<p>EMERG SAFE ALT 100 NM 3700</p>				
TACAN	COMOZ	ZIDIS	BULBS	ZILOB
2.1	2.7	3.9	6	12
880	1600	2500	4000	11,000
3.03°†	TCH 55			
6 NM	1.7 NM	2.2		
CATEGORY	C	D	E	
S-26*	540/40	431 (500-¾)		
CIRCLING**	680-1½ 571 (600-1½)	700-2 591 (600-2)	760-2¼ 651 (700-2¼)	HIRL Rwy 8-26

HI-TACAN Z RWY 26