
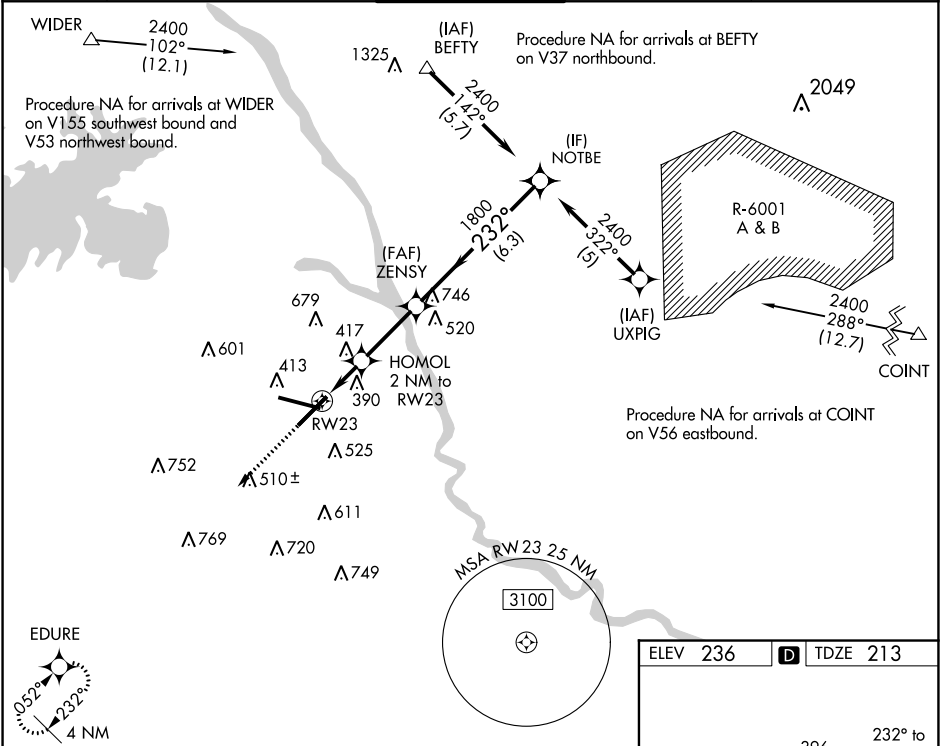


WAAS CH 40026 W23A	APP CRS 232°	Rwy Idg TDZE Apt Elev	7001 213 236
--	------------------------	-----------------------------	---

RNAV (GPS) RWY 23
COLUMBIA METROPOLITAN (CAE)

 For uncompensated Baro-VNAV systems, LNAV/VNAV NA below -1.5°C (5°F) or above 48°C (118°F). DME/DME RNP-0.3 NA. Rwy 23 helicopter visibility reduction below ¾ SM NA.	MISSED APPROACH: Climb to 2300 direct EDURE and hold.
--	---

ATIS 120.15	COLUMBIA APP CON 133.4 285.6 (290°-109°) 124.15 338.2 (110°-289°)	COLUMBIA TOWER 119.5 257.8	GND CON 121.9 348.6	CLNC DEL 119.75
-----------------------	---	--------------------------------------	-------------------------------	---------------------------



EDURE		VGSI and RNAV glidepath not coincident (VGSI angle 3.00/TCH 69).		NOTBE	
2300		HOMOL 2 NM to RW23		ZENSY 1800	
*LNAV only.		*1.3 NM to RW23		*900	
↑		2.8 NM		6.3 NM	
EDURE		232°		2400	
*LNAV only.		GP 3.00°		TCH 54	
CATEGORY	A	B	C	D	
LPV DA	503/50 290 (300-1)				
LNAV/VNAV DA	699-1¼ 486 (500-1¼)				
LNAV MDA	680/50 467 (500-1)		680/60 467 (500-1¼)		680-1½ 467 (500-1½)
CIRCLING	740-1 504 (600-1)		840-1¼ 604 (700-1¼)		880-2 644 (700-2)

