

WAAS CH 56515 W36A	APP CRS 003°	Rwy Idg 9000 TDZE 744 Apt Elev 748
--	------------------------	---

RNAV (GPS) Y RWY 36L

CHARLOTTE/DOUGLAS INTL (CLT)

RADAR required for procedure entry. RNP APCH.

T Circling NA at night. Simultaneous approach authorized. LNAV procedure NA during simultaneous operations. Use of FD or AP required during simultaneous operations. For inop ALS, increase LNAV/VNAV all Cats visibility to RVR 4500 and increase LNAV Cats C/D visibility to RVR 6000. For uncompensated Baro-VNAV systems, LNAV/VNAV NA below -10°C or above 54°C.


ALSF-2

MISSED APPROACH: Climb to 1200 then climbing left turn to 4000 direct BUDKE and hold.

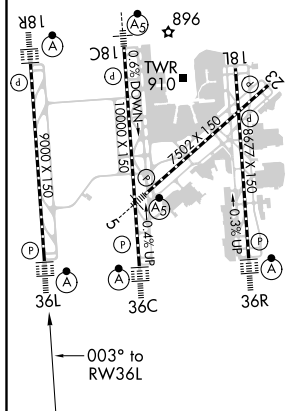
D-ATIS	CHARLOTTE APP CON	CHARLOTTE TOWER	GND CON	CLNC DEL
ARR 121.15	(001°-119°) 128.32	(Rwys 18L-36R, 5-23) 118.1 257.8	121.8 348.6 (WEST)	127.15
DEP 132.1	(120°-295°) 120.05 (296°-360°) 134.75	(Rwy 18C-36C) 126.4 257.8 (Rwy 18R-36L) 133.35 257.8	121.9 348.6 (EAST)	348.6

MISSED APCH FIX

CHARLOTTE TOWER		
(Rwys 18L-36R, 5-23)	118.1	257.8
(Rwy 18C-36C)	126.4	257.8
(Rwy 18R-36L)	133.35	257.8



ELEV 748	D	TDZE 744
HIRL all Rwy's		
REIL Rwy's 18L and 23		
TDZ/CL Rwy's 18R, 36L, 36C and 36R		



1200	BUDKE	4000	VGS1 and RNAV glidepath not coincident (VGS1 Angle 3.00/TCH 70).	CUNUK	LONIA	NUXXY	WELET
------	-------	------	---	-------	-------	-------	-------

* LNAV only. * 1.1 NM to RW36L

NLSON 2500

DEFOX 3000

CONCOR 4000

003° 7000

003° 6000


GP 3.00° TCH 55

2500

1.1 NM 4.2 NM 1.6 NM 3.2 NM 3.2 NM 3.2 NM 3.2 NM

RW36L

1.1 NM 4.2 NM 1.6 NM 3.2 NM 3.2 NM 3.2 NM 3.2 NM

CATEGORY		A	B	C	D
LPV	DA	944/18		200 (200-½)	
INAV/ VNAV	DA	1049/24		305 (400-½)	
INAV	MDA	1140/24	396 (400-½)	1140/35	396 (400-¾)
 CIRCLING		1380-1	632 (700-1)	1500-2¼ 752 (800-2¼)	1500-2½ 752 (800-2½)