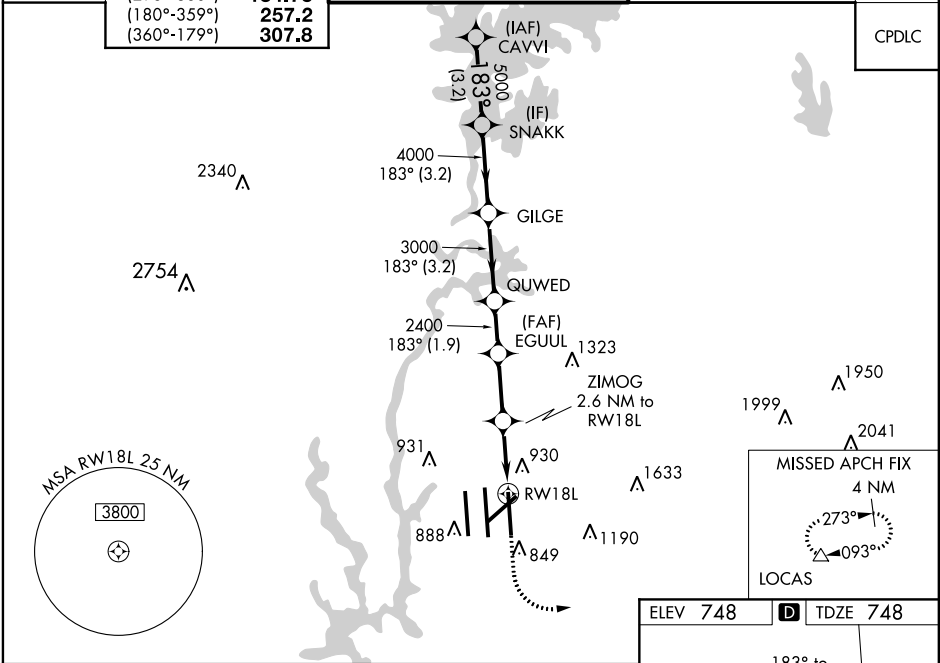


WAAS CH <b>77500</b> <b>W18A</b>	APP CRS <b>183°</b>	Rwy Idg TDZE Apt Elev	<b>8676</b> <b>748</b> <b>748</b>
--	------------------------	-----------------------------	---

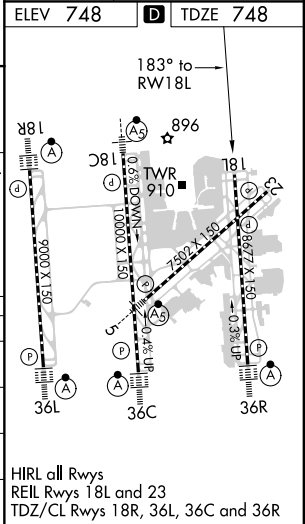
RNAV (GPS) Y RWY 18L  
CHARLOTTE/DOUGLAS INTL (CLT)

RNP APCH.	<p>⚠ Circling NA at night. Simultaneous approach authorized. LNAV procedure NA during simultaneous operations. Use of FD or AP required during simultaneous operations. ⚠ Rwy 18L helicopter visibility reduction below RVR 4000 NA. For uncompensated Baro-VNAV systems, LNAV/VNAV NA below -11°C or above 54°C.</p>	MISSED APPROACH: Climb to 1300 then climbing left turn to 4000 direct LOCAS and hold.
-----------	---	---

D-ATIS ARR <b>121.15</b> DEP <b>132.1</b>	CHARLOTTE APP CON (001°-119°) <b>128.32</b> (120°-295°) <b>120.05</b> (296°-360°) <b>134.75</b> (180°-359°) <b>257.2</b> (360°-179°) <b>307.8</b>	CHARLOTTE TOWER (Rwys 18L-36R, 5-23) <b>118.1 257.8</b> (Rwy 18C-36C) <b>126.4 257.8</b> (Rwy 18R-36L) <b>133.35 257.8</b>	GND CON <b>121.8 348.6 (WEST)</b> <b>121.9 348.6 (EAST)</b>	CLNC DEL <b>127.15</b> <b>348.6</b>
---	--	---	---	---



VGSI and RNAV glidepath not coincident (VGSI Angle 3.00/TCH 76).				
1300 4000 LOCAS				
CAVVI SNACK GILGE QUWED EGUUL ZIMOG 2.6 NM to RWY 18L *1.1 NM to RWY 18L				
GP 3.00° TCH 56 6000 5000 4000 3000 2400 *1620				
→ 3.2 NM → 3.2 NM → 3.2 NM → 1.9 NM → 2.4 NM → 1.5 NM → 1.1 NM				
CATEGORY	A	B	C	D
LPV DA	1002/40		254 (300-¾)	
LNAV/VNAV DA	1216-1⅓		468 (500-1⅓)	
LNAV MDA	1180/55	432 (500-1)	1180-1¼	432 (500-1¼)
CIRCLING	1380-1	632 (700-1)	1500-2¼ 752 (800-2¼)	1500-2½ 752 (800-2½)



SE-2, 03 DEC 2020 to 31 DEC 2020

SE-2, 03 DEC 2020 to 31 DEC 2020