

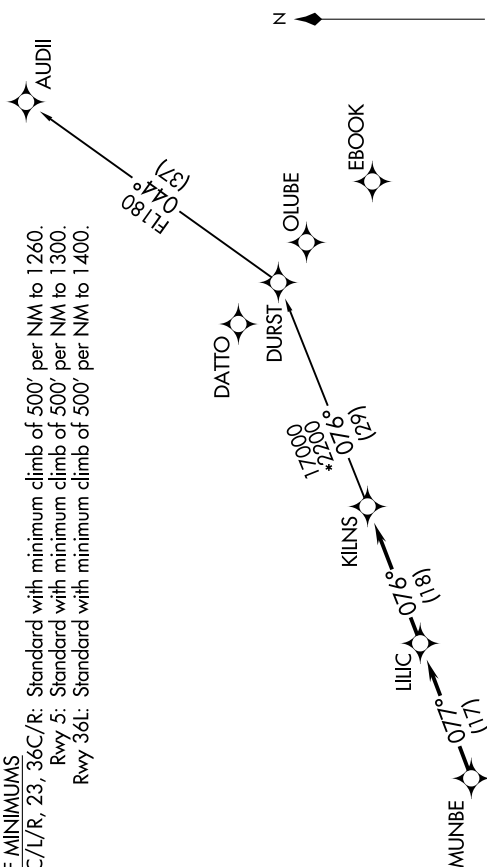
## KILNS FOUR DEPARTURE (RNAV)

D-ATIS DEP 132.1  
CINC DEL  
127.15 348.6  
CPDIC  
GND CON  
121.8 348.6 (WES  
121.9 348.6 (EAST  
CHARLOTTE TOWER  
118.1 257.8 (Rwyss  
126.4 257.8 Rwy  
133.35 257.8 (Rwy  
CHARLOTTE DEP C  
124.0 307.8

## TAKEOFF MINIMUMS

Rwys 18C/L/R, 23, 36C/R: Standard with minimum climb of 500' per NM to 1260.  
 Rwy 5: Standard with minimum climb of 500' per NM to 1300.  
 Rwy 36L: Standard with minimum climb of 500' per NM to 1400.

**TOP ALTITUDE:**  
**8000**



**NOTE:** For turbojets only.

NOTE: DME/DME/IRU or GPS required.

NOTE: RNAV 1.

NOTE: RADAR required.

NOTE: Transponder code will be issued via PDC or Charlotte CLINC DEL.  
NOTE: Accelerate to 250K, if unable advise ATC. Upon reaching 10000 MSL, accelerate to and maintain 280K, if unable advise ATC.

**NOTE:** If unable to accept climb rates, advise ATC on initial contact.

NOTE: Chart not to scale.

(NARRATIVE ON FOLLOWING PAGE)

SE-2, 03 DEC 2020 to 31 DEC 2020

## KILNS FOUR DEPARTURE (RNAV)

(KILNS4.KILNS) 03JAN19

CHARLOTTE, NORTH CAROLINA

CHARLOTTE/DOUGLAS INTL (CLT)